

AVOID THE LINES & VOTE BY MAIL



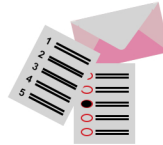
Every voter in Sacramento County will be mailed a Vote by Mail ballot for each election they are qualified to vote in, starting 29 days before Election Day.



Vote by Mail is accessible and easier to use with drop-off locations all across the County.

INSIDE THE BALLOT PACKET:

- ✓ Your official ballot
- ✓ The postage-paid return envelope
- ✓ Voting instructions
- ✓ Drop Box locations
- ✓ "I Voted" sticker



See back side for steps on how to Vote by Mail



AVOID THE LINES & VOTE BY MAIL



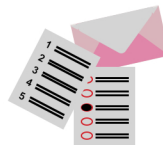
Every voter in Sacramento County will be mailed a Vote by Mail ballot for each election they are qualified to vote in, starting 29 days before Election Day.



Vote by Mail is accessible and easier to use with drop-off locations all across the County.

INSIDE THE BALLOT PACKET:

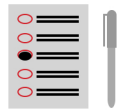
- ✓ Your official ballot
- ✓ The postage-paid return envelope
- ✓ Voting instructions
- ✓ Drop Box locations
- ✓ "I Voted" sticker



See back side for steps on how to Vote by Mail



HOW TO VOTE BY MAIL:



1. To vote, fill in the oval next to your choice on your ballot.



2. Put your voted ballot inside the pink postage-paid return envelope.



3. Sign and date the return envelope between the hole punches.

Important: In order for your ballot to count, we must match your signature on the return envelope with the signature in your voter registration record.



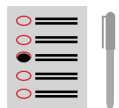
4. Seal the envelope. No postage is necessary.



5. Return the ballot by mail or at any Official Vote by Mail Ballot Drop Box or Vote Center in Sacramento County.

For more information — Visit: www.elections.sacounty.gov OR Call Toll free: (800) 762-8019

HOW TO VOTE BY MAIL:



1. To vote, fill in the oval next to your choice on your ballot.



2. Put your voted ballot inside the pink postage-paid return envelope.



3. Sign and date the return envelope between the hole punches.

Important: In order for your ballot to count, we must match your signature on the return envelope with the signature in your voter registration record.



4. Seal the envelope. No postage is necessary.



5. Return the ballot by mail or at any Official Vote by Mail Ballot Drop Box or Vote Center in Sacramento County.

For more information — Visit: www.elections.sacounty.gov OR Call Toll free: (800) 762-8019