

CONDADO DE SACRAMENTO
REGISTRO DE VOTANTES Y ELECCIONES



LEY DE OPCIÓN DEL VOTANTE
PLAN DE ADMINISTRACIÓN ELECTORAL
2018

Plan de administración electoral del condado de Sacramento
ÍNDICE

Introducción	ii
SECCIÓN 1: PLAN DE DIVULGACIÓN Y EDUCACIÓN DEL VOTANTE	1
Requisitos generales.....	1
Educación y divulgación con comunidades que hablan idiomas minoritarios	4
Educación y divulgación con comunidades de discapacitados.....	5
SECCIÓN 2: MODELO DEL CENTRO DE VOTACIÓN DEL PLAN DE ADMINISTRACIÓN ELECTORAL	6
General.....	6
Acceso a la boleta electoral.....	6
Aspectos básicos del centro de votación.....	7
Aspectos básicos de la urna de votación.....	9
Mapas con la ubicación de urnas y centros de votación	10
Consideraciones adicionales	10
LISTA DE APÉNDICES	12

Elecciones y registro de votantes del condado de Sacramento

PLAN DE ADMINISTRACIÓN ELECTORAL E.C. 4005(a)(10)(I)

INTRODUCCIÓN

Los votantes del condado de Sacramento tienen un largo historial de participación en las elecciones. Desde el comienzo de la votación sin excusas por correo en 2002, la cantidad de votantes que votan por correo (VBM, por su sigla en inglés) ha incrementado de forma constante y paulatina a un 64 % de los votantes registrados del condado.

Tras la adopción de este Modelo de centro de votación (Modelo) en junio de 2017, Elecciones y registro de votantes (VRE, por su sigla en inglés) del condado de Sacramento estableció un Comité asesor sobre accesibilidad para votar (VAAC, por su sigla en inglés) y un Comité asesor sobre accesibilidad lingüística (LAAC, por su sigla en inglés). Ambos comités han proporcionado un asesoramiento importante a VRE y continuarán siendo un componente fundamental de la administración electoral del condado.

VRE planea ampliar su programa de educación de votantes para informar a los residentes acerca del Modelo de centro de votación y las oportunidades para la participación de la comunidad. El Plan incluye muchas organizaciones asociadas y su apoyo será crucial para la implementación exitosa las elecciones con el Modelo de centro de votación en el condado de Sacramento.

La primera elección para este nuevo Modelo es la Primaria estatal de junio de 2018. Este Plan de administración electoral (Plan) proporciona información sobre cómo el condado implementará la Ley de opción del votante. Muchas de las acciones enumeradas en este Plan están proyectadas para el futuro y se incluyen como marco de lo que podría lograrse.

En resumen, este Modelo le brinda al votante más oportunidades para emitir su voto. Todos los votantes reciben una boleta de voto por correo y pueden comparecer ante cualquier Centro de votación del condado. La cantidad de Centros de votación y lugares con Urnas de votación que se establecerá se basará en la cantidad de votantes que haya registrados 88 días antes de cualquier elección. Al momento de preparar este Plan de administración electoral, el condado espera establecer 78 Centros de votación (16 abiertos 10 días antes de la elección y los 78 abiertos 3 días antes de la elección y el Día de la elección) y 52 lugares con Urnas de votación que estarán abiertos 28 días antes de la elección y el Día de la elección. Los votantes pueden enviar su voto por correo, depositarlo en un lugar con Urna de votación o en cualquier Centro de votación.

Los Centros de votación ampliaron el acceso a dispositivos de votación accesibles, con al menos tres dispositivos accesibles ubicados en cada Centro de votación. Además, los Centros de votación contarán con funcionarios electorales bilingües.

SECCIÓN 1: PLAN DE DIVULGACIÓN Y EDUCACIÓN DEL VOTANTE

Elecciones y registro de votantes (VRE, por sus siglas en inglés) del condado de Sacramento valora la oportunidad de brindar educación acerca de las actividades de votación para los residentes del condado y todas sus comunidades. Este Plan de divulgación y educación del votante delinea diversas actividades que se pueden realizar con el fin de incrementar la participación de los votantes en la votación del Modelo del centro de votación.

Además, VRE espera contar con el apoyo de numerosas organizaciones que han recibido subvenciones de las organizaciones Future of California Elections (FOCE) y Voter Choice California (VCC) para proporcionar educación y alcance comunitario en materia de la implementación de la Ley de Elección del Votante (VCA, por sus siglas en inglés). La lista de beneficiarios se muestra en el Apéndice L.

Requisitos generales

1-A *Medios para acceder a las boletas de votación y Anuncios del servicio público (PSA, por su sigla en inglés) para el Aviso de elección* *Art. 4005(a)(10)(I)(i)(II), art. 4005(a)(10)(I)(i)(VIII)*

VRE proporcionará información sobre cómo obtener una boleta de votación por correo (VBM) en formato accesible y el proceso para solicitar esa boleta en los puntos de acceso y por medio de los métodos descritos en la Sección 1-B de este documento. Los siguientes son los puntos de acceso:

- 1) Estaciones de cable comunitarias y de televisión locales
- 2) Periódicos (regionales y comunitarios)
- 3) Radio
- 4) Redes sociales y el sitio web del departamento
 - a) Cuentas de Facebook y Twitter del condado
 - b) App de Next Door
 - c) Gov Delivery
- 5) Mensajes en el transporte público (transporte regional de Sacramento, E-Tran de Elk Grove, paratransito, autobuses, trenes y centros de transbordo)
- 6) Distribución de materiales con grupos como aliados de la comunidad, organizaciones defensoras de los discapacitados, funcionarios electos, distritos especiales, distritos escolares, organizaciones de la comunidad, organizaciones religiosas y funcionarios de información pública de todo el condado
- 7) Material compartido con FORCE y VCC
- 8) Sesiones informativas para medios, que proporcionan la oportunidad de que todas las fuentes periodísticas obtengan entrevistas y material fílmico adicional sobre el Modelo del centro de votación
- 9) Departamentos del condado (como el Departamento de Salud y Servicios Humanos, de Asistencia Humana, de Servicios para Veteranos)
- 10) Anuncios del servicio público, distribuidos ampliamente a todos los medios de comunicación que operan en el condado en formatos múltiples

11) Carteleras electrónicas (Ciudad de Sacramento, ClearChannel)

VRE utilizará Anuncios del servicio público en formatos visuales y de audio para informar a los votantes acerca de la futura elección y para alertarlos sobre la línea telefónica gratuita de asistencia de VRE. Los Anuncios del servicio público se emitirán en televisión, radio, periódicos, redes sociales y carteleras electrónicas para llegar a todos los votantes, incluso a votantes con discapacidades como aquellos que sufren de sordera o dificultad para oír y aquellos que padecen ceguera o tienen una deficiencia visual. Los Anuncios del servicio público se proporcionarán a los medios de comunicación enumerados en la Sección 1-B.

La información que se brindará incluirá la opción de usar un dispositivo de votación accesible en cualquier Centro de votación y cómo usar el dispositivo; y el método para solicitar, marcar y enviar una boleta de votación accesible a través del programa de Votación por correo remota y accesible (RAVBM, por su sigla en inglés) del condado (descrito en la Sección 2-B).

1-B *Presencia en la comunidad para educar a los votantes sobre la Ley de opción del votante*

Art. 4005(a)(10)(I)(i)(III)

La presencia en la comunidad de VRE proporcionará información sobre el Modelo del centro de votación directamente a los votantes y asistentes de una amplia variedad de eventos. El objetivo de VRE es coordinar con nuestros aliados en la comunidad y con el LAAC y el VAAC para identificar las oportunidades para educar a nuestros votantes, ofrecer demostraciones del equipo de votación y explicar cómo solicitar y obtener una boleta de votación accesible. VRE hará su mejor esfuerzo por llegar a todas las áreas del condado, incluidas las ciudades y comunidades geográficas, así como las comunidades de interés. Los votantes tendrán muchas oportunidades para aprender sobre el Modelo del centro de votación y sus opciones para votar. Entre ellas se incluyen las siguientes:

- 1) El VAAC y el LAAC del departamento
 - a) Las reuniones incluyen demostraciones del sistema de votación y actualizaciones informativas
 - b) Desarrollo de materiales con miembros del VAAC y LAAC, y presentación de estos para la distribución en sus comunidades

- 2) Eventos de la comunidad (lista corta)
 - a) Banco de Alimentos de Sacramento: eventos de alimentos para las fiestas y continuo
 - b) Elk Grove Pumpkin Festival
 - c) Fair Oaks Chicken Festival
 - d) Festival de la Familia
 - e) Vietnamese Tet Festival
 - f) Banana Festival
 - g) Sacramento Comic Con
 - h) Rainbow Festival

- i) Disability Awareness (capital estatal)
 - j) APAPA Candidate's Forum
 - k) Elk Grove Multicultural Festival
 - l) Rio Linda County Fair
- 3) Presentaciones para diversos habitantes del condado:
- a) Asociaciones de vecinos
 - b) Junta de Supervisores del condado
 - c) Comité Asesor sobre Discapacidad del condado
 - d) VAAC y LAAC del estado de California
 - e) Consejos y secretarios municipales
 - f) Alcaldías de funcionarios electos
 - g) Consejos distritales escolares
 - h) Consejos distritales especiales
 - i) Comités centrales del condado y comités políticos
 - j) Comunidades religiosas
 - k) Proveedores de servicios (como Independent Living Centers, Easter Seals, Concilio de California de los Ciegos)
 - l) Comunidades lingüísticas (como La Familia, Asia Pacific Islander American Public Affairs (APAPA), Asian Community Center (ACC), Asian Americans Advance Justice (AAAJ), League of United Latina American Citizens (LULAC), County Latino Caucus
 - m) Grupos defensores de la votación (como League of Women Voters, Urban League, American Civil Liberties Union (ACLU), National Association for the Advancement of Colored People (NAACP), Common Cause, Disability Rights California (DRC), People Power, Sacramento County Disability Advocate Commission (DAC))
 - n) Organizaciones filantrópicas (como Soroptimists, Rotary, Kiwanis)
 - o) Coalición CVA de la ciudad de Sacramento
 - p) Facultades y universidades
 - q) Bibliotecas públicas de Sacramento
- 4) Oportunidades recurrentes de divulgación
- a) Mercados agrícolas (varía según la temporada)
 - b) KP International Marketplace
 - c) Ranch 99 Market
 - d) Programas educativos en escuelas secundarias (abril, septiembre y cuando se invite)
 - f) Ceremonias para nuevos ciudadanos
 - g) Programas de Inglés como segundo idioma (ESL, por sus siglas en inglés) y educación para adultos (a través de los distritos escolares)

1-C *Uso de recursos para la divulgación y educación del votante*
Art. 4005(a)(10)(I)(i)(VII)

VRE invertirá los recursos necesarios para asegurarse de que los votantes están informados sobre el proceso para votar del Modelo del centro de votación. El Apéndice J incluye la información presupuestaria para la elección de junio de 2018, además de una comparación con los presupuestos para educación y divulgación de años anteriores.

1-D *Contactos directos con votantes para proporcionarles información sobre la futura elección y promocionar la línea telefónica gratuita de asistencia para votantes.*
Art. 4005(a)(10)(I)(i)(X)

VRE se comunicará con cada votante registrado del condado de Sacramento dos veces por tarjeta postal para brindarle información sobre la futura elección y la disponibilidad de la línea telefónica gratuita de asistencia de VRE. Los contactos también podrían proporcionar información sobre cuándo esperar la Guía informativa para el votante y las opciones para votar en una elección del Modelo del centro de votación.

1-E *Postal con franqueo pagado para solicitar materiales en un idioma alternativo o en un formato accesible de votación por correo*
Art. 4005(a)(8)(B)(iii)

Todos los votantes registrados recibirán una postal con franqueo pagado con su Guía informativa para el votante para solicitar materiales en idiomas que no sean inglés y para solicitar una boleta de votación por correo en un formato alternativo accesible. Las instrucciones para completar y enviar la postal se incluirán en la Guía y en el sitio web de VRE.

***EDUCACIÓN Y DIVULGACIÓN CON COMUNIDADES QUE HABLAN IDIOMAS
MINORITARIOS***

Art. 4005(a)(10)(I)(i)(I)

VRE creó el Comité asesor sobre accesibilidad lingüística (LAAC) en agosto de 2017 para que asesorara y asistiera con la implementación de las leyes federales y estatales relacionadas con el acceso al proceso electoral para votantes con conocimientos limitados del idioma inglés. El LAAC está conformado por residentes locales que abogan por los intereses de las comunidades del condado que hablan idiomas minoritarios. Vea el Apéndice B para obtener información sobre el LAAC.

1-F *Informar a los votantes sobre la futura elección y promocionar la línea telefónica gratuita de asistencia para el votante con los medios de comunicación que sirven a las comunidades que hablan idiomas minoritarios*
Art. 4005(a)(10)(I)(i)(I)

La divulgación de información a comunidades que hablan idiomas minoritarios, lo que incluye información sobre el Modelo del centro de votación, las opciones de votación y la línea telefónica gratuita de asistencia, será un enfoque múltiple con el objetivo de incluir:

- 1) Televisión (como Univision, Telemundo, Azteca America, Crossings TV, además de canales de acceso local y canales locales en inglés - MetroCable/Access Sacramento)
- 2) Periódicos (como Sacramento Bee, Vida En El Valle, D'Primeramino Magazine, APA News In Review, World Journal News, Herburger Publications, News & Review, Messenger Publishing Group)
- 3) Radio (como las estaciones La Ranchera/Vive, Radio Lazar, Entercom)
- 4) Redes sociales y el sitio web del departamento
 - a) Cuentas de Facebook y Twitter del condado
 - b) Next Door
 - c) Gov Delivery
- 5) Cartelera electrónica (Ciudad de Sacramento, ClearChannel)
- 6) Mensajes en el transporte público (transporte regional de Sacramento, E-Tran de Elk Grove, paratransito, autobuses, trenes y centros de transbordo)
- 7) Material compartido con FOCE y VCC
- 7) Distribución de materiales con grupos como aliados de la comunidad, funcionarios electos para sus boletines informativos, ciudades, distritos especiales, distritos escolares, organizaciones de la comunidad, organizaciones religiosas y funcionarios de información pública de todo el condado
- 8) Sesiones informativas para medios, que proporcionan la oportunidad de que todas las fuentes periodísticas obtengan entrevistas y material filmico adicional sobre el Modelo del centro de votación
- 9) Anuncios del servicio público, distribuidos ampliamente a los medios de comunicación que operan en el condado en formatos múltiples
- 10) Departamentos del condado (como el Departamento de Salud y Servicios Humanos, de Asistencia Humana, de Servicios para Veteranos, de Libertad Condicional y de Servicios de Manutención Infantil)
- 11) Escuelas de educación para adultos con programas de ESL (como Elk Grove USD, Sacramento City USD)

1-G *Identificar a los votantes hablantes de idiomas minoritarios*

Art. 4005(a)(10)(I)(i)(V)

VRE utiliza la selección de idioma preferido del votante que se muestra en el formulario de registro de votante para identificar a los votantes que hablan idiomas minoritarios. Los votantes también pueden comunicarse con nosotros por teléfono o correo electrónico para actualizar su idioma de preferencia o para indicar su idioma preferido a los funcionarios electorales durante una elección. Los datos del Censo Estadounidense también se usan para identificar a las comunidades de habitantes con edad para votar que tienen un “nivel de conocimiento de inglés menor” que podrían necesitar asistencia con el idioma. Esta información se almacena en la base de datos de administración electoral de VRE.

1-H *Taller de educación del votante para votantes que hablan idiomas minoritarios*

Art. 4005(a)(10)(I)(i)(VI), art. 4005(a)(10)(I)(i)(VI)(ia)

VRE realizará un taller bilingüe de educación para el votante para cada uno de los idiomas obligatorios federales y estatales del condado de Sacramento. Al momento de preparar este plan, estos idiomas son español, chino (idiomas federales); y tagalo, vietnamita, japonés, coreano y panyabí (idiomas estatales).

Estos talleres se realizarán en la primavera de 2018 y brindarán una oportunidad para que las comunidades que hablan diversos idiomas del condado reciban información sobre los materiales y la asistencia disponible en su idioma específico, además de sobre el proceso para votar del Modelo del centro de votación. Todos los talleres tendrán intérpretes del idioma específico para que ayuden a los asistentes. Los miembros del LAAC ayudarán a la hora de seleccionar los lugares y las fechas para los talleres. La información sobre los talleres se anunciará al menos 10 días antes de la fecha de la reunión, a través de los medios de comunicación indicados en la Sección 1-B de este plan.

1-I *Anuncio del servicio público para ciudadanos que hablan idiomas minoritarios*
Art. 4005(a)(10)(I)(i)(IX)

VRE utilizará Anuncios del servicio público para informar a los votantes de las comunidades que hablan idiomas minoritarios acerca de la futura elección y la línea telefónica gratuita de asistencia. Los Anuncios del servicio público se distribuirán a través de la televisión, la radio y los periódicos hablantes del idioma minoritario, descritos en la Sección 1-E. El LAAC brindará asistencia con el desarrollo del contenido de los anuncios.

EDUCACIÓN Y DIVULGACIÓN CON COMUNIDADES DE DISCAPACITADOS

VRE creó el Comité asesor sobre accesibilidad para votar (VAAC) en agosto de 2017 para que asesorara y asistiera con el acceso al proceso electoral para votantes con discapacidades. El VAAC está conformado por residentes locales que abogan por los intereses de las comunidades de discapacitados. Vea el Apéndice A para obtener información sobre el VAAC.

1-J *El sitio web tiene información disponible de acceso público*
Art. 4005(a)(10)(I)(i)(IV)

La información que se encuentra en el sitio web de VRE (www.elections.saccounty.net) está disponible para el público y en formatos accesibles. Esta incluye el Plan de administración electoral y demás información relacionada con la Ley de opción del votante, además de información sobre cómo registrarse para votar y participar en el proceso electoral. También hay información específica de la elección disponible en el sitio web en formato accesible. El sitio además ofrece un formulario de comentarios que pueden completar los visitantes para enviar comentarios relacionados con la elección.

La información que se proporcionará incluirá lo siguiente:

- 1) Todos los votantes recibirán una boleta de votación por correo (VBM);

- 2) La opción de usar un dispositivo de votación accesible en cualquier Centro de votación y cómo usarlo;
- 3) El método para solicitar, marcar y enviar una boleta de votación accesible a través del programa de Votación por correo remota y accesible (RAVBM) del condado (descrito en la Sección 2-B).

1-K *Taller de educación del votante para la comunidad de discapacitados con el fin de incrementar la accesibilidad y la participación*

Art. 4005(a)(10)(I)(i)(VI), art. 4005(a)(10)(I)(i)(VI)(ib)

VRE realizará un taller de educación del votante en la primavera de 2018 para aumentar la accesibilidad y la participación de los votantes elegibles con discapacidades. Los miembros del VAAC ayudarán a la hora de seleccionar el lugar y la fecha para el taller. El taller incluirá, entre otros, educación sobre el Modelo del centro de votación, demostraciones del nuevo equipo de votación, la accesibilidad de los equipos de votación, información sobre el depósito de las boletas de votación y opciones para obtener una boleta de votación accesible por correo de forma electrónica. La información sobre el taller se anunciará al menos 10 días antes de la fecha de la reunión, a través de los medios de comunicación indicados en la Sección 1-B de este plan.

SECCIÓN 2: PLAN DE ADMINISTRACIÓN ELECTORAL

GENERAL

2-A *Acceso telefónico gratuito*

Art. 4005(a)(10)(I)(vii)

VRE ofrece asistencia telefónica gratuita durante todo el horario laboral. Hay personal disponible para asistir a las personas que llamen en los idiomas obligatorios a nivel federal y también hay un servicio lingüístico que se puede utilizar para brindar ayuda a los votantes en los demás idiomas obligatorios.

Línea telefónica gratuita (800) 762-8091

Servicio de retransmisión de California (para personas con discapacidades del habla y de la audición) 711

ACCESO A LA BOLETA DE VOTACIÓN

2-B *Acceso a la boleta de votación por correo para votantes con discapacidades*

Art. 4005(a)(10)(I)(ii)

Guía de información para el votante en condados

VRE preparará una Guía de información para el votante para cada elección, que tendrá información detallada sobre el proceso de votación por correo y opciones para solicitar

un reemplazo de boleta de votación por correo y para devolver tal boleta. Las instrucciones detalladas para usar el sistema de votación por correo remota y accesible se incluirán en la guía. La guía está disponible tanto en tamaño de letra grande como en formato digital.

Recibir por correo una boleta de votación por correo

Todos los votantes registrados del condado de Sacramento reciben por correo un paquete con la boleta de votación por correo para cada elección. La boleta de votación enviada se puede marcar y reenviar dentro del sobre de identificación que se incluye en el paquete de votación por correo. Vea también la Sección 1-E.

Solicitar una boleta de votación accesible en los Centros de votación

Todos los votantes registrados del condado de Sacramento pueden usar uno de los tres dispositivos de marcado de boleta de votación accesible en cualquier Centro de votación. Los votantes se registran, solicitan una boleta de votación accesible y se les proporciona una tarjeta de clave que rellena el dispositivo accesible con su boleta de votación. La boleta de votación se puede marcar por medio de la pantalla táctil, de un dispositivo táctil con audio proporcionado o de su propia tecnología de asistencia. Las máquinas de votación accesible se colocarán de forma tal que todos los votantes tengan la oportunidad de emitir sus votos de forma privada e independiente. Vea también la Sección 1-E.

Solicitar una boleta de votación accesible remota por Internet

Los votantes registrados del condado de Sacramento con discapacidades podrían optar por una boleta de votación en línea, a través del sistema de votación por correo remota y accesible (RAVBM) para solicitar una boleta descargable. El RAVBM le brinda a los votantes con discapacidades la posibilidad de solicitar que se les envíe electrónicamente una boleta de votación por correo desde un sitio web autorizado por VRE. La boleta de votación electrónica se puede descargar a la computadora del votante, marcar con la tecnología de asistencia propia del votante e imprimirse. Este voto se puede enviar de la misma forma que cualquier voto por correo: a través del correo postal, se puede depositar en una Urna de votación o en cualquier Centro de votación. Vea también la Sección 1-E.

Solicitar una boleta de votación de repuesto

Cualquier votante puede solicitar una boleta de votación de repuesto por teléfono al (916) 875 6155, por medio de una solicitud por fax al (916) 854-9796, presencialmente en un Centro de votación, en la oficina de VRE o a través del sistema en línea del RAVBM.

ASPECTOS ESENCIALES DEL CENTRO DE VOTACIÓN

2-C *Seguridad del proceso de votación en los Centros de votación*

Votar de forma segura en el Centro de votación

Art. 4005(a)(10)(I)(iv)

Toda votación realizada en los Centros de votación cumple con las normas de seguridad de la Secretaría del Estado, los procedimientos de seguridad de VRE y las normas del Código Electoral de California y los Procedimientos de uso del sistema de votación de California. Esto incluye, entre otros, garantizar que todos los equipos del Centro de votación estén sellados, se almacenen, entreguen y utilicen de conformidad con estas normas. Además, nuestros procedimientos actuales exigen que la mayoría de los trabajadores de la elección estén presentes cuando abra el sitio.

Planes de contingencia y seguridad

Art. 4005(a)(10)(I)(iv)(VIII)

Prevenir la interrupción, continuar el funcionamiento del Centro de votación

Art. 4005(a)(10)(I)(iv)(VIII)(ia), art. 4005(a)(10)(I)(iv)(VIII)(ib)

Todo el personal, incluso el que trabaje en los Centros de votación y el que brinde soporte técnico y de cumplimiento, asistirá a una capacitación amplia sobre el uso de los equipos para votar, el montaje de un Centro de votación, la asistencia para los votantes y su procesamiento, el aseguramiento de los equipos sensibles cada noche de votación y los procedimientos adecuados en caso de una emergencia.

En virtud de los requisitos del sistema de votación de California, todos los equipos certificados deben funcionar con baterías en caso de un corte del suministro eléctrico. Todos los lugares contarán con un teléfono celular. El personal que responde en caso de emergencia recibirá un listado de todos los lugares donde habrá Centros de votación. Cada Centro de votación contará con procedimientos de emergencia y recibirá un manual de instrucciones sobre las operaciones del Centro de votación y el procesamiento de los votantes.

VRE trabajará de inmediato para resolver cualquier interrupción en un lugar de votación y cada una tendrá su propia respuesta. Por lo general, si se ve interrumpido el proceso en un solo Centro de votación, VRE procurará de inmediato que el personal derive a los votantes a otros Centros de votación e informará a la policía local, a la Secretaría del Estado y proporcionará actualizaciones a los medios de comunicación para garantizar que los votantes estén informados. Si se produce un desastre natural o cualquier alteración que afecte a un Centro de votación o lugar físico de depósito de boletas de votación, habrá avisos, señalizaciones y personal adicionales disponibles para derivar a los votantes a otro lugar. Si cesaran las actividades en un Centro de votación, el personal asegurará de inmediato los equipos para votar del Centro de votación y rendirá cuentas sobre todos los materiales de votación en virtud del Código Electoral de California y las pautas de Fabricación y acabado de boletas de votación. VRE intentará abrir un Centro de votación sustituto y notificará de forma generalizada el cambio.

2-D Centros de votación: Cantidad que se establecerán, ubicaciones y horario de funcionamiento en la medida que estén disponibles al momento de la publicación
Art. 4005(a)(10)(I)(vi)

La cantidad total de Centros de votación que se establecerá.
Art. 4005(a)(10)(I)(vi)(I)

Con base en los 772 782 votantes registrados en las elecciones de noviembre de 2016 (un punto máximo), VRE establecerá un mínimo de 78 Centros de votación, 16 abiertos durante diez días previos al día de la elección y ese día. Y 62 adicionales que estarán abiertos 3 días antes del día de la elección y ese día.

La ubicación y el horario de cada Centro de votación
Art. 4005(a)(10)(I)(vi)(III), art. 4005(a)(10)(I)(vi)(VI)

VRE está trabajando en asociación con el LAAC, el VAAC y los miembros de la comunidad para identificar las ubicaciones de los Centros de votación y de las Urnas de votación. El personal del condado creó mapas de datos para cada criterio enumerado en la Sección 4005(a)(10)(B) utilizando los datos recabados en el Censo decenal de 2010, la Encuesta de la comunidad estadounidense y el archivo de registro actual de VRE. Vea el Apéndice E. Los mapas de datos muestran las áreas de los criterios que más se superponen y se utilizarán para ayudar a la hora de determinar las mejores ubicaciones.

El proceso de establecer las ubicaciones continúa al momento de la publicación de este Plan. El objetivo de VRE es colocar los Centros de votación en instalaciones completamente accesibles y muy conocidas. Todos los Centros de votación abrirán de forma ininterrumpida durante un mínimo de 8 horas por día y desde las 7 a. m. hasta las 8 p. m. el Día de la elección. La ubicación y el horario de cada Centro de votación se indican en el Apéndice F, el cual se actualizará a medida que se confirmen las ubicaciones para cada elección. La lista se incluirá en los materiales de la elección que se proporcionen a cada votante registrado. VRE no espera utilizar centros de votación móviles en las elecciones de 2018.

2-E Personal de los Centros de votación:
Art. 4005(a)(10)(I)(vi)(IX)

VRE prevé un mínimo de cinco personas en cada Centro de votación y personal bilingüe adicional. El aporte de la comunidad y los idiomas identificados en los alrededores del Centro de votación ayudarán a determinar la cantidad de personal bilingüe.

2-F Servicios para votantes con discapacidades
Art. 4005(a)(10)(I)(vi)(X)

Cada Centro de votación tendrá un mínimo de 3 dispositivos de votación totalmente accesibles con pantalla táctil. Estos dispositivos están certificados por la Secretaría del Estado para su uso en elecciones de California y permiten que cada votante marque su boleta de votación de forma

independiente y privada. También habrá a disposición lupas, lámparas de escritorio y soportes de bolígrafo. Se proporcionarán equipos de mitigación a un Centro de votación, como rampas para entradas, topes de puerta o conos para delimitar estacionamientos para discapacitados. El personal de todos los Centros de votación recibirá capacitación para ayudar a los votantes con necesidades específicas y el uso de los dispositivos de votación con pantalla táctil accesibles. Los materiales de capacitación se desarrollarán con aportes del VAAC.

2-G *Diseño y disposición de los Centros de votación*
Art. 4005(a)(10)(I)(vi)(XI)

Se utilizarán pautas de disposición para garantizar que las cabinas de votación y los dispositivos de marcado de boletas de votación accesibles se ubiquen de forma tal que permitan que el votante marque su boleta de votación de forma independiente y privada. Las disposiciones tendrán en cuenta las necesidades de accesibilidad de los votantes y se ajustarán para adaptarse a los diversos tamaños y formas de cada lugar. Vea el Apéndice G que contiene ejemplos de disposiciones.

ASPECTOS BÁSICOS DE LAS URNAS DE VOTACIÓN

2-H *Urnas de votación: Cantidad que se establecerán, ubicaciones y horario de funcionamiento en la medida que estén disponibles al momento de la publicación*
Art. 4005(a)(10)(I)(vi)

La cantidad total de Urnas de votación que se establecerá.
Art. 4005(a)(10)(I)(vi)(II)

Con base en los 772.782 votantes registrados en las elecciones de noviembre de 2016 (un punto máximo), el condado establecerá un mínimo de 52 lugares con Urnas de votación que estarán abiertos 28 días antes del día de la elección y ese día.

La ubicación y el horario de cada Urna de votación
Art. 4005(a)(10)(I)(vi)(IV), art. 4005(a)(10)(I)(vi)(VII)

El objetivo de VRE es aliarse con el LAAC, el VAAC y los miembros de la comunidad para colocar las urnas de votación en instalaciones completamente accesibles y muy conocidas. El proceso de establecer las ubicaciones de las urnas de votación continúa al momento de la publicación de este Plan. La lista de Urnas de votación y su horario se mostrarán en el Apéndice H, el cual se actualizará a medida que se confirmen las ubicaciones de las urnas de votación. Esta lista se incluirá en los materiales de la elección que se proporcionen a cada votante.

La oficina del Registro de votantes tiene una Urna de votación exterior disponible las 24 horas del día. Todas las demás Urnas de votación estarán en el interior de la sede.

MAPAS CON LA UBICACIÓN DE URNAS Y CENTROS DE VOTACIÓN

2-I *Mapas con ubicaciones* *Art. 4005(a)(10)(I)(vi)(V)*

Los mapas que muestran la ubicación de los Centros de votación y las Urnas de votación se muestran en el Apéndice I. Estos mapas se actualizarán a medida que se agreguen lugares.

CONSIDERACIONES ADICIONALES

2-J *Costos y ahorros estimados en virtud de este Plan* *Art. 4005(a)(10)(I)(v), art. 4005(g)(2)*

Los costos y ahorros estimados relacionados con la implementación de la Ley de opción del votante se muestran en el Apéndice J. VRE espera que la primera implementación de la Ley de opción del votante genere una reducción de costos en relación con el cambio de los equipos de votación del condado, a la par que se prevén aumentos de costos para cumplir con los requisitos significativamente ampliados para la participación de la comunidad y los votantes. VRE es optimista y cree que el Condado gozará de un aumento en la participación de los votantes y una disminución en los costos permanentes, como fue el caso de Colorado después de que implementara un programa similar.

Después de cada elección que se realice en virtud de la Ley de opción del votante, VRE preparará un informe comparativo de costos de la elección, el cual se publicará en el sitio web de VRE en un formato accesible.

2-K *Actividades posteriores a la elección*

Abordar disparidades significativas en la accesibilidad y participación de votantes, según lo exige la subdivisión (g)

Art. 4005(a)(10)(I)(iii)

Después de cada elección realizada en virtud de la Ley de opción del votante, VRE revisará los comentarios recibidos de los votantes y solicitará las opiniones del LAAC, del VAAC y de aliados de la comunidad sobre datos recabados de conformidad con la Sección 4005(g). VRE hará un esfuerzo razonable por abordar las disparidades significativas identificadas una por una.

Asistencia para la Secretaría del Estado con informe para la Legislatura

Art. 4005(g)(1)(A)

Proporcionar estadísticas de la elección a la Secretaría del Estado

VRE proporcionará los datos estadísticos enumerados en la Sesión 4005(g) del Código de Elecciones a la Secretaría del Estado en un plazo de seis (6) meses de cada elección.

APPENDIX A - VOTER ACCESSIBILITY ADVISORY COMMITTEE (VAAC)

DESCRIPTION

GOALS

- Assisting and advising county elections officials on existing programs to reach people with disabilities, and also provide advice on whether to create new programs.
- Advising county elections officials on where to set up voting equipment and how to recognize barriers to participation for senior voters and voters with disabilities.
- Assisting county elections officials in surveying polling places for compliance with state and federal accessibility guidelines. Evaluating an inaccessible polling place or voting area to determine if – with the use of temporary modifying equipment or measures – it can be modified to permit use by senior voters and voters with disabilities.
- Assisting and advising county elections officials in training Election Officers (Vote Center workers) to assist senior voters and voters with disabilities.
- Assisting in the recruitment of Election Officers (Vote Center workers) with disabilities or who are seniors.
- Assisting county elections officials to enhance website accessibility, including establishing a county website accessibility statement.
- Assisting county elections officials with implementing the Voter's Choice Act and advising on outreach and education opportunities.
- Assisting county election officials on the creation and distribution of election materials to help educate voters with disabilities on services available such as the use of accessible ballot marking device, remote accessible vote by mail, voting assistance available at the vote center, curbside voting, and overall education on elections process.

SACRAMENTO COUNTY ELECTION ADMINISTRATION PLAN 2018

APPENDIX A - VOTER ACCESSIBILITY ADVISORY COMMITTEE (VAAC)

August 2, 2017 Meeting

Public Notice

PUBLIC NOTICE

Meeting of the Sacramento County Voting Accessibility Advisory Committee
Jill LaVine, the Sacramento County Registrar of Voters, is seeking citizens interested in serving in a volunteer capacity on the Voting Accessibility Advisory Committee in Sacramento County. All interested parties are encouraged to attend the meeting August 1, 2017.

The purpose of the Voting Accessibility Advisory Committee is the following:

- Provide a forum for public input on the development of a draft Election Administration Plan.
- Allow the public to advise and assist the Registrar of Voters regarding access to the elections process for voters with disabilities.

Meeting Date: August 1, 2017

Meeting Time: 5:00 p.m.

Location: Sacramento County Administration Building
700 H Street, Hearing Room 1
Sacramento, CA 95814

This is an accessible facility. Requests for documents in accessible formats, interpreting services, assistive listening devices, or other accommodations should be made by calling the County Voter Registration and Elections Department at (916) 875-6512 or by emailing your request to voterinfo@sacounty.net, no later than five working days prior to the meeting.

SACRAMENTO COUNTY ELECTION ADMINISTRATION PLAN 2018

APPENDIX A - VOTER ACCESSIBILITY ADVISORY COMMITTEE (VAAC)

Agenda

Location: County Administration Building
700 H Street, Hearing Room 1

Date / Time: Tuesday, August 1, 2017 - 5:00 p.m.

1. Call to order and Roll Call
2. Welcome and Meeting Protocols
3. Membership Applications and Appointments of Members
4. Public Input on Development of the Draft Election Administration Plan
5. Public Input on Access to the Elections Process for Voters with Disabilities
6. Other matters for consideration

Adjourn

Summary

Handouts provided to attendees included: Agenda; California Voter's Choice Act Infographic; Guide to Voter's Choice Act and Vote Centers in Sacramento County; Sacramento County Voter Registration and Election, Election Administration Plan E.C 4005 (a) (10) (I) Discussion and Consultation Document; VAAC Membership Applications.

Call to Order: Committee Chair, Courtney Bailey, welcomed all guests to this 1st meeting to establish a Sacramento County Voting Accessibility Advisory Committee (VAAC). She provided the background for Sacramento County's move to the Voter's Choice Act and a brief summary of the Vote Center model being rolled out in June 2018.

Welcome and Meeting Protocols: Alice Jarboe, Assistant Registrar of Voters for Sacramento County Voter Registration and Elections, welcomed the attendees and reviewed meeting protocols, emphasizing the open and inclusive nature of the County Voting Accessibility Advisory Committee (VAAC).

Membership Applications and Appointment of Members: The Voters Choice Act (VCA) directs the implementation of a VAAC to allow for community input. Applications for VAAC committee members are being accepted. A minimum of 7 committee members are desired and applications will be accepted on a rolling basis. Paper applications were made available. The application is also available online on the county's website.

Discussion: The group discussed the development of the Draft Election Administration Plan and access to the elections process for voters with disabilities. Several questions were fielded during discussion regarding accessible marking devices, cost of the

APPENDIX A - VOTER ACCESSIBILITY ADVISORY COMMITTEE (VAAC)

devices, accessibility for drop-off locations, accessibility for the blind, handling languages, poll watchers ability to “get out the vote”, requesting Vote Center sites, and casting ballots through a scanner or Vote by Mail envelope.

The questions will assist the Election Office in developing a list of FAQ's. Many of the answers are found in the Voter's Choice Act, i.e., three voting accessible terminals being required at each Vote Center. Answers will develop as the Election Office procedurally works through the implementation of the Voter's Choice Act.

Meeting wrap up and things to think about for next meeting:

- Interested committee members were reminded to complete an application. There are 7 committee applications so far and more are welcome. The VAAC is open to the public so please pass the word along to anyone that may be interested.
- What percentage of voters will have accessibility needs? It was suggested that the Social Security Administration may have data on the number of residents receiving disability benefits.
- We are looking for public input to develop the Election Administration Plan.
- What is a good location for these meetings, what time should we start, how long should they be, and how frequent? It was suggested no longer than 90 minutes and locations suggested were the Sacramento Admin Building, Central Library, City Council Chambers, SMUD Building, Voter Registration Office, DSA Headquarters, and roaming locations, i.e., in Elk Grove. Locations with best accessibility for buses and a meeting end time that doesn't exceed the time buses stop running was requested. Frequency suggested was twice a month and then reduce to once a month.
- Other suggestions for meetings included: Have a sign language interpreter, offer to teleconference the meeting in case people cannot attend in person, closed captioning, serve refreshments, and pay for bus fare.
- How do we get the information out, Google Docs?
- Mindy Romero with California Civic Engagement Project would like to present a tool for helping us choose our locations.
- Regional Transit is working on an optimization plan that may affect services around Vote Center locations.

The next VAAC meeting:

August 16th
6:00 p.m. to 7:00 p.m.
Elk Grove City Council Chambers
8400 Laguna Palms Way
Elk Grove

SACRAMENTO COUNTY ELECTION ADMINISTRATION PLAN 2018

APPENDIX A - VOTER ACCESSIBILITY ADVISORY COMMITTEE (VAAC)

August 16, 2017 Meeting

Official Notice

MEETING NOTICE

Meeting of the Sacramento County Voting Accessibility Advisory Committee

The Sacramento County Voter Registration and Elections office will hold a meeting of the Voting Accessibility Advisory Committee. All interested parties are encouraged to attend the meeting August 16, 2017.

The purpose of the Voting Accessibility Advisory Committee is the following:

- Provide a forum for public input on the development of a draft Election Administration Plan.
- Provide a forum for public input to advise and assist the Registrar of Voters regarding access to the elections process for voters with disabilities.

Meeting Date: August 16, 2017

Meeting Time: 6:00 p.m.

Location: Elk Grove City Council Chambers
8400 Laguna Palms Way
Elk Grove, CA

This is an accessible facility. Requests for documents in accessible formats, interpreting services, assistive listening devices, or other accommodations should be made by calling the County Voter Registration and Elections Department at (916) 875-6512 or by emailing your request to voterinfo@sacounty.net, no later than five working days prior to the meeting.

SACRAMENTO COUNTY ELECTION ADMINISTRATION PLAN 2018

APPENDIX A - VOTER ACCESSIBILITY ADVISORY COMMITTEE (VAAC)

Agenda

Location: Elk Grove City Council Chambers
8400 Laguna Palms Way
Elk Grove, CA

Date / Time: Wednesday, August 16, 2017 - 6:00 p.m.

1. Call to order and Roll Call
2. Welcome and Meeting Recap
3. Membership Applications and Appointments of Members
4. Public Input on Development of the Draft Election Administration Plan
5. VAAC Input on Vote Center and Ballot Drop Off Locations
6. Other matters for consideration

Adjourn

Summary

Handouts Provided: Agenda; California Voter's Choice Act Infographic; Guide to Voter's Choice Act and Vote Centers in Sacramento County Brochure; Vote Center Information Flyer; Election Administration Plan Discussion and Consultation Document; VAAC Open Call for Membership; and VAAC Membership Applications.

Call to Order: Committee Chair, Courtney Bailey, called the Sacramento County Voting Accessibility Advisory Committee meeting to order.

Attendees introduced themselves and everyone was reminded to sign in. Current VAAC member applicants in attendance included: Donald Tuttle, Inderjit Kallirai, Irene Capps, Jennifer Garets, Marianne Knoy, Margaret Johnson, and Russell Rowlings. Not present: Richard Stanley, Carol Moss, Charlene Jones, and Nick Bloise.

VAAC Committee Members will be officially appointed at the next meeting.

Opening Comments:

- The Voters Choice Act (VCA) directs the implementation of a Voting Accessibility Advisory Committee (VAAC) to allow for community input. This committee will assist the Sacramento County Voter Registration & Elections Department (VRE) by providing input and feedback for developing the County Election Administration Plan as directed by the Voter's Choice Act.
- A two year commitment is anticipated for committee members. Member applications will be accepted on a rolling basis. Paper applications are available at meetings and available online on the county's website.

APPENDIX A - VOTER ACCESSIBILITY ADVISORY COMMITTEE (VAAC)

- Background was given for Sacramento County's move to the Voter's Choice Act and a brief summary of the Vote Center model being rolled out in June 2018.

Discussion/Questions

Discussion centered on the VAAC responsibilities and what issues will be addressed.

- Input on Vote Center locations. VRE would like input on locations that will meet accessibility and other site requirements to host a drop box for 29 days and 4 and 11 day Vote Center sites and how to best present those sites to the public.
- Resource ideas to help educate the public: We need more mechanisms to get out the word about VCA. Suggested: State resources, disability newsletters, county newsletter, and social media.
- Need to improve our website to make accessibility information more prominent on the home page. Dedicate a page just to disabilities; remote accessible voting; more comprehensive information on voters with disabilities.
- Specific media outreach suggestions. The County Media Office (CMO) controls any social media requests. Budget is limited at about \$71K. We can go back to the Board and make requests in early December. Suggestion: Are there grants available to help with outreach costs?
- A more in depth presentation of the VCA was requested to help educate the committee. Suggested: Also educate on the county's accessibility surveying process.
- A concern about duplication of efforts was voiced. It was noted that Sacramento County is one of a small group of counties to be first in implementing this new voting model.
- Public consult meeting dates are yet to be determined.

Meeting Wrap Up Items:

- It was agreed that it would be helpful to have notice of topics that will be discussed in advance for each meeting so there is an outline to help stay on track. Other topics suggested: Updates on location selection process, site surveying for accessibility, county web page disability resource information, voting equipment, social media use, outreach events, remote accessible voting and building the Election Administrative Plan.
- A survey for committee member's availability will be emailed to help identify best locations, days, and times for meetings.
- Courtney will send out an outline of future meeting topics and the date, time and location of next meeting.

SACRAMENTO COUNTY ELECTION ADMINISTRATION PLAN 2018

APPENDIX A - VOTER ACCESSIBILITY ADVISORY COMMITTEE (VAAC)

September 12, 2017 Meeting

Agenda

Location: Sacramento County Voter Registration & Elections Office
7000 65th Street, Community Room
Sacramento, CA 95823

Date / Time: Tuesday, September 12, 2017 - 5:30 p.m.

1. Call to order and Introductions
2. Appointments of Members
3. Goals of this Committee
4. August 1 & 16 Meeting Recap
5. Voter's Choice Act Presentation
6. Future Agenda Topics & Other matters for consideration
7. Adjourn

Please join us after the meeting for a tour of the Elections Office.

Summary

Handouts Provided:

Meeting Agenda; 2017 VAAC Meeting Schedule, August 1& 16 Meeting Recap, VAAC Goals, and Voter's Choice Act Presentation

Call to Order:

Committee Chair, Courtney Bailey, called the Sacramento County Voting Accessibility Advisory Committee meeting to order. Committee Members and attendees introduced themselves.

Committee Members in attendance included: Donald Tuttle, Richard Stanley, Nick Bloise, Margaret Johnson, Russell Rawlings, and Terry Schanz.

Committee Members Not Present: Indi Kallirai, Irene Capps, Marianne Knoy, Carol Moss, and Charlene Jones.

Appointment of Members:

Committee Member in attendance were officially appointed and sworn in.

Agenda Items and Discussion Comments:

- Request for any revisions to August 1st and 16th meeting notes were taken for updating, encouraging action items to follow-up on for subsequent meetings.
- Reviewed the goals of the VAAC.
- There will be a SOS hearing on 9/27/17 for certification of Remote Accessible Voting Systems (ROVS) from Democracy Live and Five Cedars.

APPENDIX A - VOTER ACCESSIBILITY ADVISORY COMMITTEE (VAAC)

- In order for voters to vote privately and independently, equipment consideration should be made for visual, intellectual, and manual dexterity disabilities.
- Voters will be able to bring their own assistive devices to use on our equipment, i.e., an assistive sip and puff device, to any Vote Center or vote from home with their own equipment using the ROVS online to mark their ballot.
- Two Public Consultation Meetings will be held September 15th. The first meeting will be held from 10:00 a.m. to 11:30 a.m. and focus on voter accessibility. The second meeting will be held from 1:00 p.m. to 2:30 p.m. and will focus on language accessibility. Both meetings will be held here at the Voter Registration and Elections Office.
- Members suggested that Consultation Meetings be held at 6:00 p.m. in order to get more public participation.
- It was acknowledged that the County Voter Registration and Elections website was improving with the addition of several resources links.
- Elk Grove E-Transit is terminating weekend service in October.
- Members requested a calendar of VCA implementation items and progress of those items.
- The SOS Working Group is focusing on how the “get out the vote” effort will work with the Voter’s Choice Act.
- Presentation of the Voter’s Choice Act.
 - Sacramento, Napa, Nevada and San Mateo counties have adopted the VCA so far.
 - To address the 14 considerations for Vote Center locations in SB450, data from the American Community Survey (ACS) that is based on census tracts and data from our Election Management System was used to create the maps that identify areas of greatest need for Vote Centers.
 - New 2016 ACS data is coming out this Thursday, 9/14/17
- Comments about VC considerations for locations included: Mega churches have large parking spaces and usually more available space; consistent and recognizable community location like libraries, government office, community centers would be ideal VC’s; would not recommend police stations because of the intimidation factor for some communities; plenty of chairs need to be provided for voters

Action Items:

- Will data maps be updated with 2016 ACS information?
- Can we map populations of seniors over 65?
- Can we calculate how many people will show up at Vote Centers by looking at past polling place statistics for votes cast at polling places? How many ballots dropped off per location?
- Previous meeting question- Are there grants available to help with outreach costs?
- Calendar on VCA Implementation (check with Nevada County)

The next VAAC meeting will be held on September 26th at 6:00 p.m. to 7:00 p.m. here at the VRE Office.

SACRAMENTO COUNTY ELECTION ADMINISTRATION PLAN 2018

APPENDIX A - VOTER ACCESSIBILITY ADVISORY COMMITTEE (VAAC)

September 26, 2017 Meeting

Agenda

Location: Sacramento County Voter Registration & Elections Office
7000 65th Street, Community Room
Sacramento, CA 95823

Date / Time: Tuesday, September 26, 2017 – 6:00 p.m.

1. Call to order and Introductions
 2. VAAC Co-Chair
 3. September 12 Meeting Recap
 4. Voter Center & Ballot Drop-off locations: physical access requirements and Sacramento County's procedures for reviewing locations
 5. Future Agenda Topics & Other matters for consideration
- Adjourn

Summary

Handouts Provided:

Meeting Agenda; 9/26/17 Meeting Summary, Polling Place Survey Presentation & Review Forms, De Minimus Departures per DAC/VAAC Suggestions, Inaccessible Polling Places- November 8, 2016, Public Hearing on Request for Approval of Voting Technology

Call to Order:

Committee Chair, Courtney Bailey, called the Sacramento County Voting Accessibility Advisory Committee meeting to order. Audience introductions were made.

Committee Members in attendance included: Carol Moss, Marianne Knoy, Donald Tuttle, Richard Stanley, Nick Bloise, and Terry Schanz.

Committee Members Not Present: Indi Kallirai, Irene Capps, Charlene Jones, Russell Rawlings, Margaret Johnson

VAAC Co-Chair Position:

Courtney requested that anyone interested in being the VAAC Co-Chair to please let her know.

Review of Previous Meeting's Recap and Action Items Results:

- No changes or additions to the previous meeting summary were requested.
- 2016 American Community Survey data at census level will come out in December. VRE will determine at that time if we will update the information.

APPENDIX A - VOTER ACCESSIBILITY ADVISORY COMMITTEE (VAAC)

- Map of voters over 65 presented. Data came from the county voter database. The median age of voters is 48 years.
- It is difficult to anticipate the traffic flow of VC's because voters can go anywhere in the county. With current precinct data, voters were assigned a specific polling place to cast their ballot. A map was displayed representing the number of voters who cast ballots at the polls in November 2016 by the nearest site that has said yes to a 4-Day Vote Center. Another map of Vote by Mail Ballot drop-offs at Polls was also displayed.
- Currently there are grants available through Voter's Choice California for Community Organizers and Leaders to support the effective implementation of the Voter's Choice Act. Grant amount are \$1k to \$10K and you can apply at <https://voterschoice.org/apply-for-a-grant/>. There is also a bill for state funding (SB 113 has been signed by the governor and disbursement of the funds is in the works). A letter from advocates to the Sacramento County Board of Supervisors was sent encouraging a budget increase for elections outreach and media.
- The calendar for Voter's Choice Act Implementation is still in the works.

Agenda Items and Discussion Comments:

- DAC and VAAC members were invited equipment demonstrations held right before our VAAC meeting. Democracy Live and Five Cedars demonstrated their Remote Accessible Vote by Mail ballot marking systems (RAVBM) and ES&S and Dominion demonstrated their ballot marking equipment for accessible voting at a Vote Center. Any comments on the equipment demos should be emailed to Courtney.
- Can RAVBM be used by anyone? The RAVBM is intended for voters with disabilities and overseas and military voters to use. You are not required to prove that you have a disability in order to mark your ballot with RAVBM. With our current RAVBM for military voters, voter files are uploaded daily and able to use get their ballot to mark. "At-home ballot marking" was a term suggested for use to describe this process.
- The Secretary of State's website contains the staff reports on the voting equipment testing and certification.
- VRE website verbiage approved for Accessible Voting webpage. Courtney will send out for review and comment by VAAC members.
- Mindy Romero with California Civic Engagement Project will present a tool to help in identifying areas that need Vote Centers at the October 10th VAAC meeting.
- Courtney reviewed the physical access requirements, procedures, mitigation techniques, and forms used for Vote Center and Ballot drop-off location review. Also discussed were:
 - "de minimus departures", or allowances just outside the state standards that the County DAC helped to establish in 2014 to help determine the severity of the barriers at a location.
 - Ratings for accessibility, lighting, availability, interest and location (visibility)
 - Public Transportation concerns were brought up over some not running and inaccessible paths of travel. Courtney to work with Regional Transit and Paratransit more closely on status of public transportation stops and services.
 - Courtney: Off-street parking required to have one van accessible parking space. If the entire parking lot has excessive slopes (a particular location in Folsom), is it misleading

APPENDIX A - VOTER ACCESSIBILITY ADVISORY COMMITTEE (VAAC)

to put a Van Accessible sign here knowing that it is not van accessible and a wheelchair lift could not land there?

Action Items:

- When will the next consultation meetings be scheduled?
- Request for more information on polling place turnout, including seniors and AutoMARK usage
- Social Security data (from Richard Stanley) analysis on people who receive benefits by zip code needs to be completed. Also, inquire about data from DMV on temporary and permanent placard holders.

The next VAAC meeting will be held on October 10th at 6:00 p.m. to 7:00 p.m. here at the VRE Office.

SACRAMENTO COUNTY ELECTION ADMINISTRATION PLAN 2018

APPENDIX A - VOTER ACCESSIBILITY ADVISORY COMMITTEE (VAAC)

October 10, 2017 Meeting

Agenda

Location: Sacramento County Voter Registration & Elections Office
7000 65th Street, Community Room
Sacramento, CA 95823

Date / Time: Tuesday, October 10, 2017 – 6:00 p.m.

1. Call to order and Introductions
2. VAAC Co-Chair
3. September 26 Meeting Recap
4. Vote Center & Ballot Drop-off Location Siting Tool
Special Guest Speaker: Dr. Mindy Romero, California Civic Engagement Project
5. Sacramento County Vote Center & Ballot Drop-off Location Updates
6. Future Agenda Topics & Other matters for consideration
7. Adjourn

Summary

Handouts Provided:

Meeting Agenda; 9/26/17 Meeting Summary

Call to Order:

Committee Chair, Courtney Bailey, called the Sacramento County Voting Accessibility Advisory Committee meeting to order. Audience introductions were made.

Committee Members in Attendance: Margaret Johnson, Irene Capps, Russell Rawlings, Charlene Jones, Donald Tuttle, Nick Bloise, Theresa Riviera

Committee Members Not Present: Carol Moss, Indi Kallirai, Richard Stanley, Terry Schanz, Marianne Knoy

VAAC Co-Chair Appointment:

Margaret Johnson accepted the position of Co-Chair

Review of Previous Meeting's Recap and Action Items Results:

- No changes were requested to the 9/29/17 meeting notes.
- The date for the next consultation meeting is scheduled for October 16th from 4 p.m. to 6 p.m. and will be held at the County Admin Building at 700 H Street, Meeting Room 2.
- Still to come- a map of Social Security data to help identify areas of high disability benefit recipients. Richard Stanley will provide the information and the Elections Office will create the map.

APPENDIX A - VOTER ACCESSIBILITY ADVISORY COMMITTEE (VAAC)

Agenda Items and Discussion Comments:

- Vote Center & Ballot Drop-off Location Siting Tool Presentation by Guest Speaker, Mindy Romero from the California Civic Engagement Project:
 - CCEC is developing an interactive siting tool that will assist Elections Officials with varying budgets to identify areas where the need is the greatest for Vote Centers and Ballot Drop-off Boxes in their counties.
 - SB450 requires counties to take into account 14 criteria when selecting sites. Mindy reviewed each of the criteria and the various data sources. The map will identify sites down to a several block area. This tool will be publically available to view.
- Mobile Vote Centers are an option for additional Vote Centers above the required number. Suggestions were made to have these available at food truck events, farmer's markets, and other local events, low population large geographical areas. Also, mobile sites could be added just for Election Day. The elections office does not foresee implementing mobile vote centers for the June 2018 election at this time.
- Concerns voiced about street parking not giving enough room for van accessibility. No on-site parking will receive a score of "0" for a parking rating.
- Pedestrian walk audits suggested.
- The accessible voting web page has been updated. Courtney will send out the link to the site and asks that committee members please review and email her with any corrections or revisions by end of week so translations can be completed.
- The Elections office will be holding a Poll Worker Appreciation Event the week of 11/13/17. Session will be scheduled throughout the week and participants will receive service recognition and an introduction to the Voter's Choice Act. They will also learn about the new staffing opportunities available to them.
- Feedback needed on how to present maps without facility names to show sites that have said they are available or are a "maybe" status.

Action Items:

- Next meeting agenda items to include Vote Center Locations/Drop Boxes, street parking vs. parking garages, accessibility ratings, public transportation partners, and outreach materials
- Email committee with link to story map.

The next VAAC meeting will be held here on November 7th at 6:00 p.m.

SACRAMENTO COUNTY ELECTION ADMINISTRATION PLAN 2018

APPENDIX A - VOTER ACCESSIBILITY ADVISORY COMMITTEE (VAAC)

November 7, 2017 Meeting

Agenda

Location: Sacramento County Voter Registration & Elections Office
7000 65th Street, Community Room
Sacramento, CA 95823

1. Call to order and Introductions
Courtney Bailey and Margaret Johnson, Co-Chairs
2. October 10 Meeting Recap
3. Voting Equipment Selection Update
4. Website Update
5. Vote Center & Ballot Drop-off Locations Update: Physical Access Review
6. Voter's Choice Act Outreach Materials Review & Ideas
7. Future Agenda Topics & Other matters for consideration
8. Adjourn

Summary

APPENDIX B – Language Accessibility Advisory Committee (LAAC)



Sacramento County Voter Registration & Elections Language Accessibility Advisory Committee

CHAIR

HANG NGUYEN

CO-CHAIR

SECRETARY

BROOKE CROTZER

MEMBERS

EDGAR CALDERON
HANA JOY
INDERJIT KALLIRAI
PALVINDER KAUR
HYOWAN KIM
ELENA MORROW
EDSON PEREZ
THERESA RIVIERA
KOY SAETEURN
TERRY SCHANZ

GOALS

- Assist and advise county elections officials on existing programs to reach voters with limited-English proficiency, including:
 - Recruitment and staffing of bilingual Election Officers
 - Provide feedback on election and voter education materials
 - Enhance website usability
- Provide expertise on language accessibility issues
- Promote language accessibility initiatives
- Respond to the County's questions regarding language accessibility issues

SACRAMENTO COUNTY ELECTION ADMINISTRATION PLAN 2018

APPENDIX B – Language Accessibility Advisory Committee (LAAC)

SACRAMENTO COUNTY
VOTER REGISTRATION AND ELECTIONS
LANGUAGE ACCESSIBILITY ADVISORY COMMITTEE
AGENDA

Location: Voter Registration and Elections Office
7000 65th Street, Community Room

Date / Time: Wednesday, August 2, 2017 - 5:00 p.m.

1. Call to order and Roll Call
2. Welcome and Meeting protocols
3. Membership Applications and Appointments of Members
4. Public Input on Development of the Draft Election Administration Plan
5. Public Input on Access to the Elections Process for Voters with limited-English Proficiency
6. Other matters for consideration

Adjourn

This is an accessible facility. Requests for documents in accessible formats, interpreting services, assistive listening devices, or other accommodations should be made by calling the County Voter Registration and Elections Department at (916) 875-6512 or by emailing your request to voterinfo@saccounty.net, no later than five working days prior to the meeting.

APPENDIX B – Language Accessibility Advisory Committee (LAAC)

Language Accessibility Advisory Committee

Meeting Summary 08/02/2017

Introduction/Notes:

- Hang opened and welcome everyone to the first meeting of the LAAC
 - She provided a brief overview of the Voters Choice Act and how that will change the June 2018 Election
- The LAAC homework will be on helping us with the Election Administration Plan and what should be included in this plan
- The LAAC will be instrumental in helping the County provide and or recommend vote center locations
- Alice set the basic meeting guidelines, noting that the LAAC is an open and inclusive committee
- We received two applications from people to be on the LAAC committee
 - Applications are available in paper and online
 - Applications are accepted on a continual basis
 - We would like to have a minimum of 7 people on this committee
- The Election Administration Plan will be how we will implement the Voters Choice Act

Questions/Comments:

- The members asked several questions about the Election Administration Plan
 - How vote centers will be located
 - How best to share the vote center site information to the public
 - How to get the message out to though the media
- Many of the answers to these questions are in the Election Administration Plan document
- Staff continues to develop the process for implementation
- The vote center surveying is an ongoing process and member input will help identify additional locations to survey
- Member comments provided additional media outlets for use in reaching our minority language communities

Next Meeting Suggestions:

- Meeting Location: Voter Registration and Elections office
- Meeting Time: 5:30 PM
- Length of Meeting: 1 hour to 1 ½ hours
- How often we meet: Once a month
- We plan on having additional meetings, another scheduled meeting is in two weeks

Future Topics:

- Vote Center sites or potential sites

SACRAMENTO COUNTY ELECTION ADMINISTRATION PLAN 2018

APPENDIX B – Language Accessibility Advisory Committee (LAAC)

SACRAMENTO COUNTY
VOTER REGISTRATION AND ELECTIONS
LANGUAGE ACCESSIBILITY ADVISORY COMMITTEE
AGENDA

Location: Voter Registration and Elections Office
7000 65th Street, Community Room

Date / Time: Wednesday, August 17, 2017 - 5:00 p.m.

1. Call to order and Roll Call
2. Welcome and Meeting Recap
3. Membership Applications and Appointments of Members
4. Public Input on Development of the Draft Election Administration Plan
5. LAAC Input on Vote Center and Ballot Drop Off Locations
6. Other matters for consideration

Adjourn

This is an accessible facility. Requests for documents in accessible formats, interpreting services, assistive listening devices, or other accommodations should be made by calling the County Voter Registration and Elections Department at (916) 875-6512 or by emailing your request to voterinfo@saccounty.net, no later than five working days prior to the meeting.

APPENDIX B – Language Accessibility Advisory Committee (LAAC)

Language Accessibility Advisory Committee

Meeting Summary 08/17/2017

Introduction:

- Hang opened and welcomed everyone to the second LAAC meeting
- Brief overview of the Voters Choice Act and how the LAAC is part of this
- It was highly encouraged for everyone to be on the email subscription list
- LAAC applications are still being accepted and members will be appointed soon
 - Applications are available in paper and online
 - Applications are accepted on a continual basis

Notes/Questions and Comments:

- Members provided great ideas on other areas to target with our outreach
 - Neighborhood Associations (Newsletters)
 - Non-Profits
 - Community Centers (Different language communities)
 - Churches (Different language communities)
 - Places that assist the public (Example: DHA)
- Staff is still in the process of getting all flyers translated
- Members made it clear that Sacramento County should have its own social media accounts
 - Posts would not get lost and easier to access the community with important information
- Discussed by members that the best way to display information on drop boxes and vote centers would be by zip codes

Next Meeting Suggestions:

- Look over discussion document and provide us with feedback
- Look over website and provide us with feedback

APPENDIX B – Language Accessibility Advisory Committee (LAAC)



Sacramento County Voter Registration & Elections

Language Accessibility Advisory Committee

CHAIR

HANG NGUYEN

CO-CHAIR

SECRETARY

BROOKE CROTZER

MEMBERS

EDGAR CALDERON
HANA JOY
INDERJIT KALLIRAI
PALVINDER KAUR
HYOWAN KIM
ELENA MORROW
EDSON PEREZ
THERESA RIVIERA
KOY SAETEURN
TERRY SCHANZ

Location: Voter Registration and Elections Office
7000 65th Street, Community Room
Sacramento, CA 95823

Date/Time: Wednesday, October 25th, 2017 - 6:00 p.m.

1. Call to order and Roll Call
2. Appointments of Members
3. Goals of this Committee
4. August 17th Meeting Recap
5. Voter's Choice Act Presentation
6. Future Agenda Topics
7. Other matters for consideration
8. Adjourn

Please join us after the meeting for a tour of the Elections Office

APPENDIX B – Language Accessibility Advisory Committee (LAAC)

**Language Accessibility Advisory Committee
Meeting Summary 10/25/2017**

Introduction:

- Hang welcomed everyone and called the third LAAC meeting to order
- Announcement of Hang's maternity leave beginning Nov 9th, and the introduction of Mike and Whitney who will be chairing the LAAC during her absence
- LAAC emails (LAACinfo@saccounty.net) will be monitored by Mike and Whitney
- Introduction of attendees and swearing in of present committee members
- Goals read by Mike
- Recap of August 17th meeting
- LAAC Vote Center PowerPoint Presentation

Questions/Comments:

- Members raised several questions and good ideas to consider:
 - Will drop boxes be near vote centers?
 - Drop Boxes are not included in the Vote Center count requirements – they are counted separately, 52 and 78 respectively
 - What is the ethnic breakdown of the 36% that are Polling Place voters?
 - How do we reach and engage the Elderly?
 - Do we have audio translators?
 - Suggestion of reaching out to CA Endowment for audio equipment
- SOS is currently working on translating all materials into 9 languages that can be customized and localized
 - Committee to review translated materials and encouraged to provide any additional translations
- Follow-up needed:
 - Social media ideas
 - Members were invited to submit hashtag ideas to the LAAC email
 - Members to review and share the EAP Discussion document, and were encouraged to provide feedback
 - Members to review LAAC page and offer feedback on resources
 - Vote Center location ideas
 - Community Resources – ESL, Casa Español, Adult Ed, KP International, APAPA, Galt, Gurdwara – Elk Grove and Gerber area, citizenship classes
 - Searching for ethnic media outlets to educate and promote the VCA

Future Agenda Topics:

- Language Workshops
 - Ideas on location, content (consistent message), frequency and timeframe

APPENDIX B – Language Accessibility Advisory Committee (LAAC)



Sacramento County Voter Registration & Elections

Language Accessibility Advisory Committee

CHAIR

HANG NGUYEN

ACTING CO-CHAIRS

WHITNEY TOMOSOVICH
MIKE VANDERPOOL

SECRETARY

BROOKE CROTZER

MEMBERS

EDGAR CALDERON
HANA JOY
INDERJIT KALLIRAI
PALVINDER KAUR
HYOWAN KIM
ELENA MORROW
EDSON PEREZ
THERESA RIVIERA
KOY SAETEURN
TERRY SCHANZ

Location: Voter Registration and Elections Office
7000 65th Street, Community Room
Sacramento, CA 95823

Date/Time: Wednesday, November 29th, 2017 - 6:00 p.m.

1. Call to Order and Roll Call
2. October 25th Meeting Recap and Assignment Follow-up
3. Draft EAP Comments
4. Partner Training – VRE Outreach Presentation
5. Language Workshops
6. Other Matters for Consideration
7. Adjourn

SACRAMENTO COUNTY ELECTION ADMINISTRATION PLAN 2018

APPENDIX C - ADVOCATE TEAM

MEMBERS

Sacramento County Voter Registration and Elections Staff
Secretary of State Staff (Jana Lean, James Schwab)
California State Legislature (Darren Chesin, Ethan Jones)
California Voter Foundation (Kim Alexander)
California Civic Engagement Project (Mindy Romero)
ACLU (Raul Macias)
Common Cause (Nicolas Heidorn)
DRC (Fred Nisen, Paul Spencer)
League of Women Voters / LULAC (Theresa Riviera)
NAACP (Tracie Stafford)

MEETING AGENDAS AND SUMMARIES

August 4, 2017 meeting

Agenda (no agenda prepared for this meeting)

Summary

On the call:

Jill LaVine	Alice Jarboe
Heather Ditty	Courtney Bailey
Hang Nguyen	William Kwong
Mindy Cuppy	Danielle Perez
Andrew Kehoe	Lisa Gasperoni
Darren Chesin	Ethan Jones
James Schwab	Jana Lean
Kim Alexander	Raul Macias
Fred Nisen	Paul Spencer
Mindy Romero	

VRE staff updated the Team on the following:

LAAC and VAAC activities, outreach activities, and website materials

Vote Center (VC) and Drop Off Site (DOS) activities including staffing models and resurveying polling places for suitability and agreement to be VC/DOS

Provided an overview of the surveying process that includes meeting ADA accessibility standards

SACRAMENTO COUNTY ELECTION ADMINISTRATION PLAN 2018

APPENDIX C - ADVOCATE TEAM

Partners for VC/DOS to date - CSUS, Cosumnes Community College, Sacramento Public Libraries, City Halls, ACC, Meals on Wheels, Mutual Housing of California, Clear Channel, SPCA, other county buildings

Voter Education and Community Meetings have included CAPITAL, APAPA, Elk Grove Chamber of Commerce

Media in the works - videos for information sharing and education, informational brochures and info-graphic flyers

Redesign of the Election's mobile app for voter information and polling place lookup to reflect the VCA model

Questions from the team:

Did the schools have a concern with weekend hours related to DOS? The concern was more with non-students on campus, could be security problem.

For the DOS, just looking at inside or freestanding outside? VRE office has a 24 hour outside box, planning right now for interior boxes while awaiting the regulations; will release an RFP after the regulations are released. Exterior box would take between 4 and 6 months to install, including at county buildings.

What other ethnic communities are being contacted? We have contacts with NAACP and on-going contact with Univision.

Was LULAC contacted? Yes, LULAC representative was invited to be part of this team.

How best to comment on the EAP document? Email or written comments to VRE office; in any format (whole document with comments, stand-alone comments).

What is the payment amount for use of the facility? Prefer to stay at not more than \$100 per day, but could go up to \$200 per day.

Several team members suggested improvements to the website: remove password protection, add voters with disability page under resources, spell out EAP.

Budget for media and outreach was discussed briefly. Final budget hearings begin September 6.

The Registrar asked those on the call to volunteer in the following areas: video ideas, train the trainer partners, presentation ideas, and review of the FAQs being prepared by staff. No offers of volunteer support were immediately forthcoming and the request will be held over to the next meeting agenda.

Meeting schedule was decided as once a month. The next conference call / meeting is scheduled for September 8th at 10 a.m. (moved from September 1st in consideration of the Labor Day holiday).

Items set for discussion outside this group:

Are the locations of the VC/DOS required to be included in the EAP? When can the EAP be amended? Concern is for public to have input on where VC/DOS are located. Darren and Ethan were requested to provide feedback. Jana is to schedule the meeting the week of August 7th.

Vote Center balloting was requested to be added to the next meeting agenda.

APPENDIX C - ADVOCATE TEAM

September 8, 2017 meeting

Agenda

1. EAP Consultation Meetings 9/15 (noticed on 8/31)
2. Balloting at Vote Centers (CCROV 17066)
3. Voter Education Opportunities
4. Vote Center Survey Update
5. 'Homework' and items no one volunteered for
6. Any additional items you would like to discuss

Summary

On the call:

Jill LaVine	Alice Jarboe
Heather Ditty	Courtney Bailey
Hang Nguyen	Karen Startup
Mindy Cuppy	Darren Chesin
James Schwab	Tracy Stafford
Kim Alexander	Raul Macias
Fred Nisen	Paul Spencer

VRE staff and section updates

Outreach:

Flyers are in translation and a new County newsletter will have an article on the VCA. There are 15 Voter Education events during September and October; staff would like additional events to add to the calendar.

SOS has designated the last two weeks in September as High School Voter Education weeks, and VRE will be at 8 high schools during this time addressing voter education and pre-registration.

FAQs are in final review for posting to the website next week.

Campaign Services:

Prepping materials for the June 2018 filing period, opening in February. Have been meeting with the City Clerks to share VCA information.

VBM and VST (IT):

Updating the VRE website for VCA materials and EAP comment forms, including fillable form, and adding individual pages for the LAAC and VAAC (a suggestion from this group).

In the process of developing videos for education and outreach on the VCA.

Reviewing the layout of the County's VIG to be consistent with the recent Election Code changes.

APPENDIX C - ADVOCATE TEAM

Working the LAAC team to identify best meeting dates and times.
Reviewed some of the events attended to promote VCA (Celebrasian event).

Precincts:

Reviewed the status of resurveying all existing polling places for use as VC or DOS (drop off site), with 124 will participate as either a VC or DOS, 72 are no, and 18 still need surveying.

There remains a great deal of follow-up on site surveying and over the next two months staff will review availability and accessibility of the sites, then rate the sites based access, location, parking, lighting, and visibility to provide a list of 'best to least desirable' sites that can be used when considering the specific VC and DOS for an election. The surveying will continue through this year and next year. Members were asked to provide sites for VRE to add to the survey list, especially in the Folsom area. Members asked if all communities were being included in the survey process, including campuses. VRE staff noted that all the County's recognized communities and colleges are being included in the survey process. Herald was presented as an example, that while it has few proximity requirements, it is a unique community for VCA purposes. Reviewed Voter Education opportunities, partnering with City of Sacramento, Greater Sacramento Urban League, and Sacramento Public Libraries. Would like suggestions for additional contacts/partners as well as help with ideas on the best way to reach out to all the communities (videos, PowerPoint, flyers/brochures).

VAAC meeting schedule has been established and the PowerPoint will be presented for their review and feedback. The agenda will also include the basics of the VCA and that a VC will look like.

Poll Worker staffing will be tied to the type of job, with hourly pay for multi-day workers (inspector pay and clerk pay), perhaps a stipend for single day workers, and ballot 'runners' receiving a based wage. Need to work out details with County payroll. Other state's experience showed this provided for better retention of poll workers.

Members asked if the training for VC poll workers had been created yet. Staff noted this is in development and will include interacting with voters with disabilities. The County's DAC has participated in the training, providing excellent feedback. The training will be more extensive, and cover more procedures in support of VC activities. Members noted they would be available to attend and assist with accessibility training. Planning a Poll Worker appreciation 'open house' for the estimated 15,000 poll workers currently on file, thanking them for their past service, explaining the VCA and inviting them to continue serving in a VC.

1. EAP consultation meetings

The Consultation meetings are scheduled for September 15 at 10 and 1:30. The first meeting will be for representatives of voters with disabilities and the second meeting for representatives of voters with language needs.

Members questioned the time of the consultation meetings, noting their concern that attendance will be low or overwhelmed should another community attend the meeting. VRE noted that comments can be submitted on-line as well as presented in person at either of these meetings.

APPENDIX C - ADVOCATE TEAM

There was general discussion on the date for the EAP meeting. The date for the EAP public meeting has not been set yet. The development of the Draft EAP will result from the Consultation meetings. Once the Draft is developed, a public Draft EAP meeting can be scheduled. Prior to holding the meeting, the Draft EAP document will need to be translated (about two weeks), then it will be posted to the website at least 2 weeks before the meeting to receive public input on the Draft EAP, and the input period continues for 2 weeks after the meeting.

2. Balloting at Vote Centers

The SOS released CCROV 17066 clarifying that the intent of the bill is to allow a voter to vote a ballot at any VC and place that ballot in a VC ballot box without the use of an envelope. Voters will be able to drop off their VBM ballot, get a replacement VBM ballot, or get a non-envelope ballot and place that in a separate ballot box designated for that purpose at the VC. These non-envelope ballots cannot be taken with the voter, nor can they be returned at any other voting site or Drop Off Box.

3. Voter Education Opportunities

VRE staff have been making presentations throughout the county, including at City Council meetings, Rotary Clubs, and to elected officials. Many of the Cities have asked for presentations in 2018, as they won't be on the ballot until November 2018. VRE staff will present at Mr. Heidorn's 9/19 event.

4. Vote Center Survey Update

(Reviewed above)

5. Homework

VRE staff noted that the department's FAQs will be sent out to this group next week and will be posted to the website. This team's feedback on these, from a general public perspective would be appreciated. Are these understandable and easy to follow? Are there any questions or topics that are missing? Staff also noted the Resources page will be on the VAAC agenda for review.

Members noted information on accessible voting options and language access would be good. It was also mentioned that separate pages should be created to provide information for voters with disabilities and for voters needing language assistance. It was also suggested that VBM information be expanded, including signature verification and security information.

VRE staff shared the work in progress on reviews of other website, video ideas and VAAC/LAAC agenda items.

6. Additional Items for Discussion

Members asked if the voting system RFP was already out. Staff noted that it was out in mid-July and responses have been received and are being rated. The RFP was presented in Lots to allow vendors option in responding to the RFP.

APPENDIX C - ADVOCATE TEAM

The scores will be based on their written response and their demonstration. The Board of Supervisors will be presented with staff recommendations in October. Members asked if they would participate in the demonstrations and ask questions. Staff noted this would not be an option, but Subject Matter Experts from system security and voter accessibility will be assisting rating the demonstrations

Staff reminded the team that this group has a lot of work to do in a very short time and was requested to keep the team membership to those who support the County's diverse communities.

Members asked staff to resend the previous emails and meeting summary. It was also requested that the emails be standardized.

One VRE staff member has been designated the 'sender' - look for emails from Cindy Jensen, with the subject line Sacramento County Advocate Team.

APPENDIX C - ADVOCATE TEAM

October 6, 2017 meeting

Agenda

1. Section Updates
2. Items from Previous Meeting, September 8, 2017
3. EAP Consultation Meeting Updates
4. Frequently Asked Questions (FAQ's) Review and Discussion
5. Voter Education and Outreach Partner and Partner Training
6. Any additional items you would like to discuss

Summary

On the call:

Jill LaVine	Alice Jarboe
Heather Ditty	Courtney Bailey
Karen Startup	Jose Farreras,
Laura Anderson	Kim Alexander
Darren Chesin	Mindy Cuppy
Raul Macias	Nicolas Heidorn
Tracy Stafford	James Schwab
Paul Spencer	

1. VRE staff and section updates

Outreach:

Staff attended 15 speaking engagements in September and participated in the High School Voter Education week. More than a dozen events are currently scheduled in October. Events for November and December are being scheduled.

Campaign Services:

Staff is updating the calendar of events for candidate filing. A glossary of terms is being created to assist candidates with the transition to VCs. Staff would like input from members on content for the glossary.

Precincts:

Met with Greater Sacramento Urban League who provided additional community contacts for the North Sacramento and Oak Park areas. The VRE website now has additional information on the Get Involved link. Additional pages on accessible voting after the RFP process for a new voting system is complete. Dr. Romero presented her siting tool at the recent VAAC meeting. VAAC members have started visiting Senior facilities throughout the county. An Election Officer Appreciation Week will be held November 13 - 17, to thank all the people who worked at a polling place. This is also an opportunity to offer information on working at a VC.

APPENDIX C - ADVOCATE TEAM

Staff will meet with library staff to review their voter education program on October 24. Continuing to review process changes needed for election administration activities related to polling places.

A site survey status was provided, noting some surveys are outstanding and site rating is pending.

Following the sharing of tentative sites with the VCA-global email list with team members, staff received calls from 14 tentative sites who said they received complaints. One of these sites has now declined to participate in VC activities. This sharing has produced a negative effect on the department's ability to conduct VC elections.

VBM and VST (IT)

LAAC webpage in process. VST and Outreach sections are working on video ideas for VCA education. Staff is reviewing the VIG content and cover, goal is to provide best format for VC information. The VCA website is updated often, be sure to check this for new content.

2. Items from Previous Meeting, September 8, 2017

An update on the voting system RFP was provided. The DTech department conducted a thorough review of each vendor's security.

3. EAP Consultation Meeting Updates

A second consultation meeting for input on the Draft EAP is scheduled for October 16, 2017 from 4 to 6 p.m. at the County Administration Building.

4. Frequently Asked Questions (FAQs) Review and Discussion

At the last meeting, staff asked for comments on the FAQs, but have not yet received any feedback. The current FAQs have been posted to the website and can be updated as new or clarified FAQs are received.

5. Voter Education and Outreach Partner and Partner Training

Staff reviewed the Partner Training for community groups. This will provide a standard message that community groups can use when they are making presentation about the VC program. A draft talking points outline will be sent to members with the next agenda.

Staff asked members to provide any messages they would like to include in the Media and Education campaign.

6. Any additional items you would like to discuss

Team member comments:

Expand the on-line comment form to be for any comments.

Have a kick-off story in the Bee.

Many of the advocacy groups are chapters, may not have uniform communication among the chapters.

How will campaigns be notified of voters who voted.

Team member updates:

SACRAMENTO COUNTY ELECTION ADMINISTRATION PLAN 2018

APPENDIX C - ADVOCATE TEAM

A voting system demonstration by ES&S will be conducted at Waffle Square, downtown, Friday 10/13.

VCC/FOCE webinars the last two weeks were well attended.

Staff requested input on video ideas and partner training ideas.

APPENDIX C - ADVOCATE TEAM

November 3, 2017 meeting

Agenda

1. ROV VCA Update
2. Items from Previous Meeting, October 6, 2017
3. Frequently Asked Questions (FAQ's) Review and Discussion
4. Voter Education and Outreach Partner and Partner Training
5. Advocacy updates

Summary

On the call:

Jill LaVine	Alice Jarboe
Heather Ditty	Karen Startup
Hang Nguyen	Nicole Callaway
Laura Anderson	Laura McCasland
Jana Lean	Kim Alexander
Nicolas Heidorn	Paul Spencer
Sam Seng	

1. ROV VCA Update

Staff is busy. The RFP intent to award letters have been published, include Dominion, Runbeck, Democracy Live and Tenex held desk management. Some cities have asked for presentations - Elk Grove next week, then Rancho Cordova

The EAP draft document is in development.

Outreach events are being coordinated with the public libraries, tentatively scheduled for April.

Vote Center and Drop Box location surveying continues.

Members congratulated staff on RFP selections and asked about the release date for the EAP.

Members also asked about VRE conducting outreach at New Citizen ceremonies.

2. Items from Previous Meeting, October 6, 2017

The online comment form is available for any comments. Other pages now have links to this comment form.

Members asked how candidates will be notified of those who have voted. Staff noted the SOS sponsored SB450 working group has discussed this and is evaluating reporting options.

3. Frequently Asked Questions (FAQ's) Review and Discussion

APPENDIX C - ADVOCATE TEAM

Staff received several comments from members that will expand information shared through the FAQs.

Additional comments can be sent to Cindy Jensen.

4. Voter Education and Outreach Partner and Partner Training

The Team discussed the partner training outline ideas and suggested the following additions:

LAAC and VAAC information

Clarified that CVR will be the term used in State and VRE publications

Explain signature verification

Expand security and chain of custody

What the Drop Box locations look like

Explain the RAVBM process

Members were asked to have any additional ideas to Cindy J. in time to have the program out by the end of November.

5. Advocacy updates

Paul Spencer shared that he is working on content (RAVBM, social media, websites) for the March 8th FOCE conference in Los Angeles, tool kits in plain language, and reviewing the Nevada County Draft EAP. He shared that the recent Greenhaven community event was well attended.

Nicolas Heidorn shared he is working internally with his membership to provide education about the VCA closer to the election, and is reviewing documents on the County's website.

Kim Alexander noted she has been attending the County's LAAC and VAAC meetings and SOS regulation hearings.

Sam Seng said that she is reviewing voter registration programs from across the state with the goal to put some plans together for Sacramento.

Jana Lean said her office is busy with regulations, working groups and task forces.

Other discussion:

Nicolas Heidorn requested information on Spanish translation activities, including what terms are being used for Vote Center and other words from the VCA. It was noted that the state LAAC was working on standardized translations and that group would be a good resource. He also asked about informational videos.

Jana Lean noted the SOS should have these ready after the first of the year.

Kim Alexander suggested a standard hashtag, #saccountyvotes.

Next Meeting - December 1, 2017, 10:00 a.m.

APPENDIX D - EAP PUBLICATIONS

Notice Date: August 31, 2017

PUBLIC NOTICE

Consultation Meeting for the Development of the Draft Plan for the Administration of Elections Conducted Pursuant to the Voter's Choice Act

For Interested Residents, Representatives from the Disability Community and Community Organizations and Individuals that Advocate on Behalf of, or Provide Services to, Individuals with Disabilities

Jill LaVine, the Sacramento County Registrar of Voters, invites interested residents, including representatives and advocates of the County's disability communities, to provide consultation and input on the development of the County's draft Election Administration Plan. All interested parties are encouraged to attend the meeting September 15, 2017.

The purpose of the meeting is to provide a forum for public input on the development of the County's draft Election Administration Plan.

Meeting Date: September 15, 2017

Meeting Time: 10 a.m. to 11:30 a.m.

Location: Sacramento County Voter Registration and Elections Office
7000 65th Street, Suite A
Sacramento, CA 95823

This is an accessible facility. Requests for documents in accessible formats, interpreting services, assistive listening devices, or other accommodations should be made by calling the County Voter Registration and Elections Department at (916) 875-6512 or by emailing your request to voterinfo@saccounty.net, no later than five working days prior to the meeting.

APPENDIX D - EAP PUBLICATIONS

Notice Date: August 31, 2017

PUBLIC NOTICE

**Consultation Meeting for the Development of the Draft Plan for the Administration
of Elections Conducted Pursuant to the Voter's Choice Act**

*For Representatives, Advocates, and Other Stakeholders of the County's Language
Communities*

Jill LaVine, the Sacramento County Registrar of Voters, invites interested representatives of the County's language communities to provide consultation and input on the development of the County's draft Election Administration Plan (EAP). All interested parties are encouraged to attend the meeting September 15, 2017.

The purpose of the meeting is to provide a forum for public input on the development of the County's draft Election Administration Plan.

Meeting Date: September 15, 2017

Meeting Time: 1:30 p.m. to 3:00 p.m.

Location: Sacramento County Voter Registration and Election
7000 65th Street, Community Room
Sacramento, CA 95823

This is an accessible facility. Requests for documents in accessible formats, interpreting services, assistive listening devices, or other accommodations should be made by calling the County Voter Registration and Elections Department at (916) 875-6512 or by emailing your request to voterinfo@sacounty.net, no later than five working days prior to the meeting.

APPENDIX D - EAP PUBLICATIONS

Notice Date: October 6, 2017

PUBLIC NOTICE

Second Consultation Meeting for the Development of the Draft Plan for the Administration of Elections

For Interested Residents, Representatives from the Disability Community and Community Organizations and Individuals that Advocate on Behalf of, or Provide Services to, Individuals with Disabilities

And

For Representatives, Advocates, and Other Stakeholders of the County's Language Communities

Jill LaVine, the Sacramento County Registrar of Voters, invites interested residents, including representatives and advocates of the County's disability communities and the County's language communities, to provide consultation and input on the development of the County's draft Election Administration Plan. All interested parties are encouraged to attend the meeting October 16, 2017.

The purpose of the meeting is to provide a forum for public input on the development of the County's draft Election Administration Plan.

A discussion and consultation document is available on the department's webpage at www.elections.saccounty.net/VoteCenters/Documents/EAP-Discussion-and-Consultation-Document-Web.pdf. Comments can also be provided through the department's website at www.elections.saccounty.net.

Meeting Date: October 16, 2017
Meeting Time: 4 p.m. to 6 p.m.
Location: Sacramento County Administration Building
Hearing Room 2
700 H Street
Sacramento, CA 95814

This is an accessible facility. Requests for documents in accessible formats, interpreting services, assistive listening devices, or other accommodations should be made by calling the County Voter Registration and Elections Department at (916) 875-6512 or by emailing your request to voterinfo@saccounty.net, no later than five working days prior to the meeting.

SACRAMENTO COUNTY ELECTION ADMINISTRATION PLAN 2018

APPENDIX D - EAP PUBLICATIONS

Notice Date: November 27, 2017

NOTICE OF AVAILABILITY OF DRAFT ELECTION ADMINISTRATION PLAN

AND

**NOTICE OF PUBLIC MEETING CONSIDER THE DRAFT ELECTION ADMINISTRATION PLAN
FOR SACRAMENTO COUNTY**

NOTICE IS HEREBY GIVEN by Jill LaVine, the Sacramento County Registrar of Voters, that a public meeting will be held for the purpose of receiving comments on the Draft Election Administration Plan.

NOTICE IS FURTHER GIVEN that the Draft Election Administration Plan (Plan) is posted on the Registrar's website at www.elections.saccounty.net. The Plan is available in English, Spanish, Chinese, Tagalog, Vietnamese, Japanese, Korean, and Hindi in accordance with federal and state law.

Comments on the Plan may be submitted using the on-line comment form on the Registrar's website (www.elections.saccounty.net), by email at voterinfo@saccounty.net, in writing (address below), or in person at the public meeting.

Meeting Date: December 12, 2017
Meeting Time: 5 p.m. to 7 p.m.
Meeting Location: Sacramento County Voter Registration and Elections
7000 65th Street, Training Room
Sacramento, CA 95823

For more information regarding this meeting please call (916) 875-6451 or email voterinfo@saccounty.net.

This is an accessible facility. Requests for documents in accessible formats, interpreting services, assistive listening devices, or other accommodations should be made by calling the County Voter Registration and Elections Department at (916) 875-6512 or by emailing your request to voterinfo@saccounty.net, no later than five working days prior to the meeting.

SACRAMENTO COUNTY ELECTION ADMINISTRATION PLAN 2018

APPENDIX D - EAP PUBLICATIONS

Notice Date: January 13, 2018

NOTICE OF AVAILABILITY OF AMENDED DRAFT ELECTION ADMINISTRATION PLAN

NOTICE IS HEREBY GIVEN by Jill LaVine, the Sacramento County Registrar of Voters, that the Amended Draft Election Administration Plan (Amended Plan) is posted on the Registrar's website at www.elections.saccounty.net. The Plan is available in English, Spanish, Chinese, Tagalog, Vietnamese, Korean, Hmong, and Punjabi in accordance with current federal and state laws.

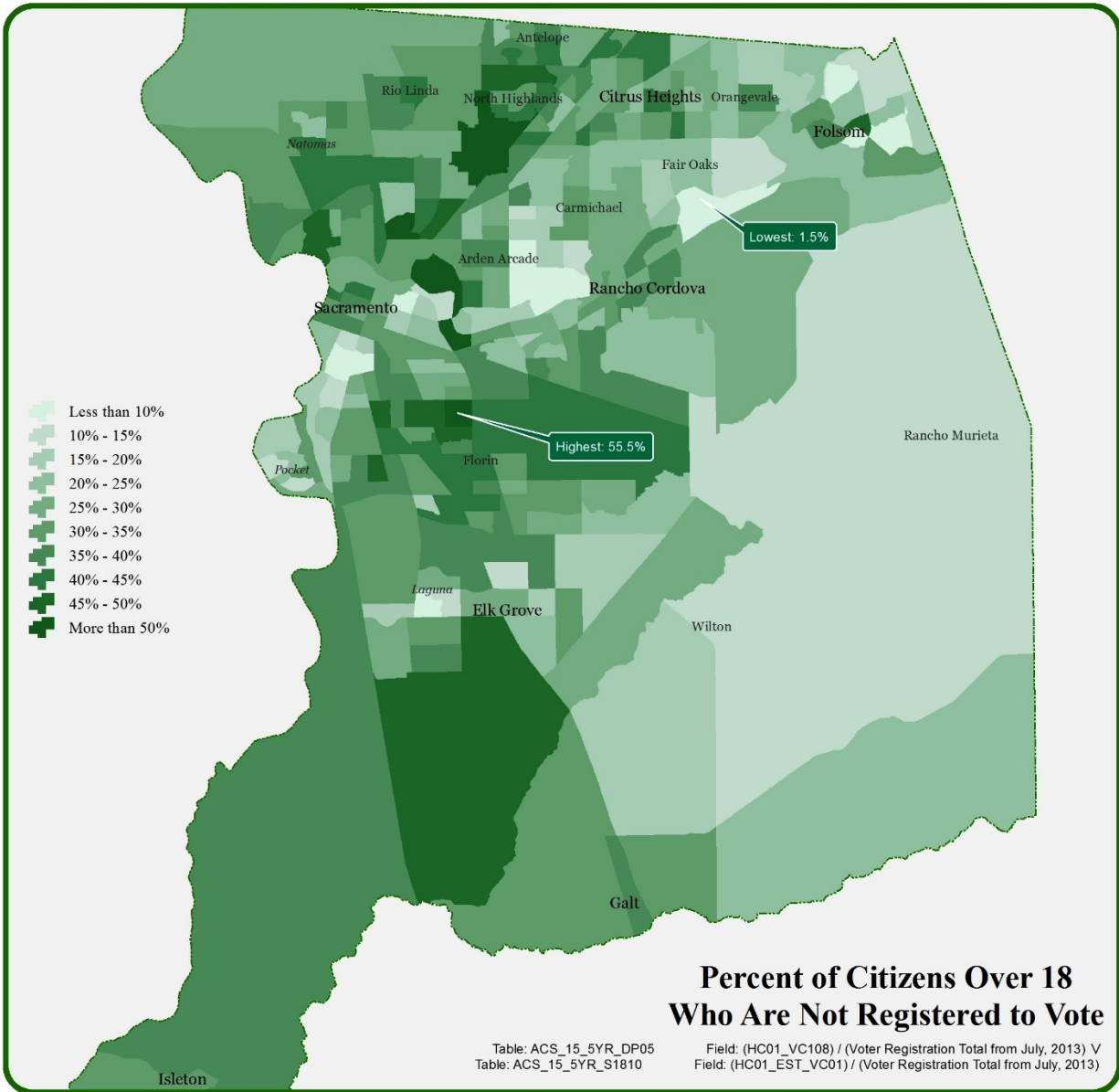
The Registrar is accepting public comments on the Amended Plan. The comment period is now open and will close on January 27, 2018 at 5 p.m.

Comments on the Amended Plan may be submitted using the on-line comment form on the Registrar's website (www.elections.saccounty.net), by email at voterinfo@saccounty.net, or in writing to Sacramento County Voter Registration and Elections, 7000 65th Street, Suite A, Sacramento, CA 95823.

For more information regarding this notice, please call (916) 875-6451 or email voterinfo@saccounty.net.

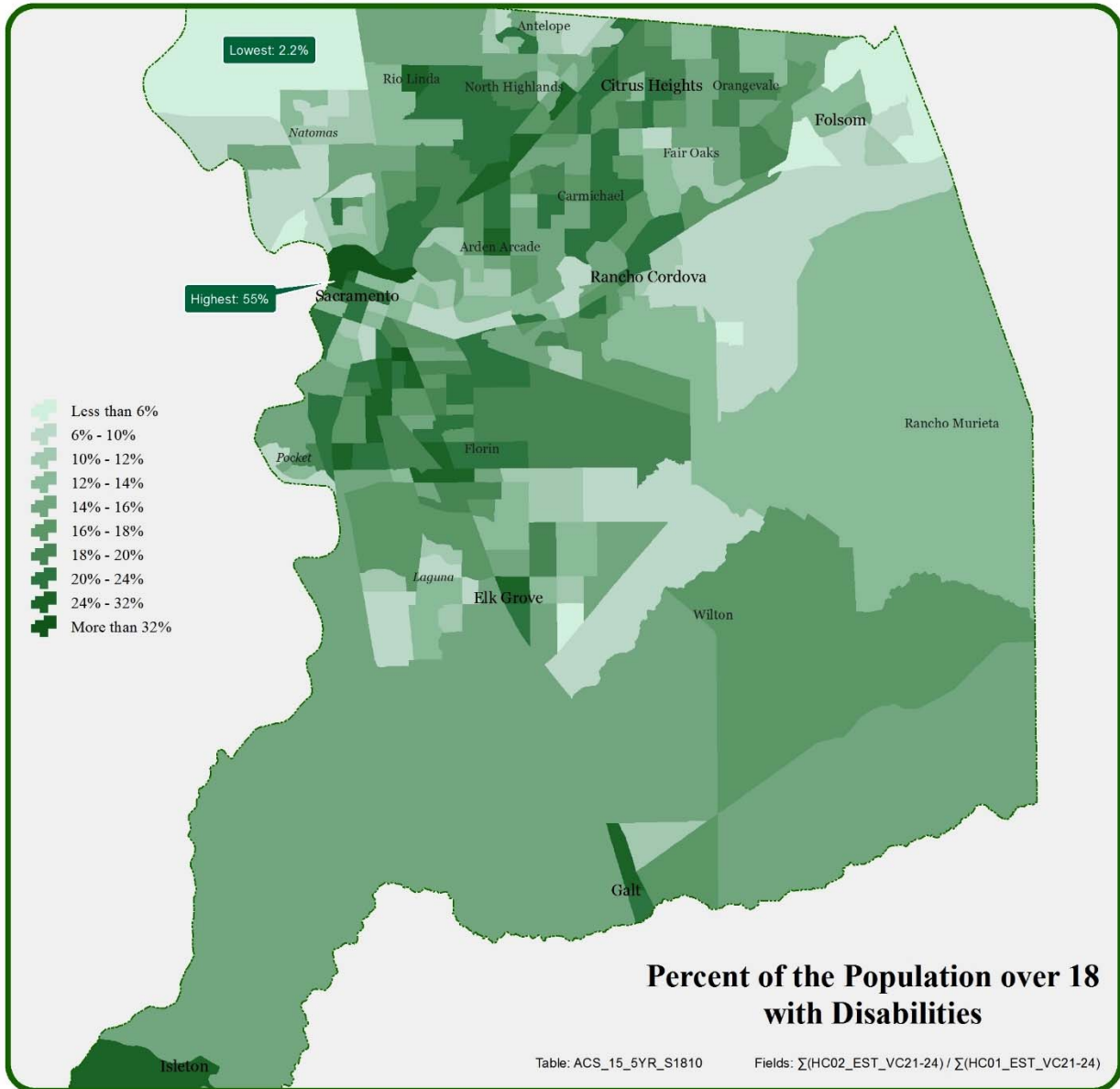
APPENDIX E - DATA MAPS

1) PERCENT OF RESIDENTS 18 AND OLDER WHO ARE NOT REGISTERED TO VOTE



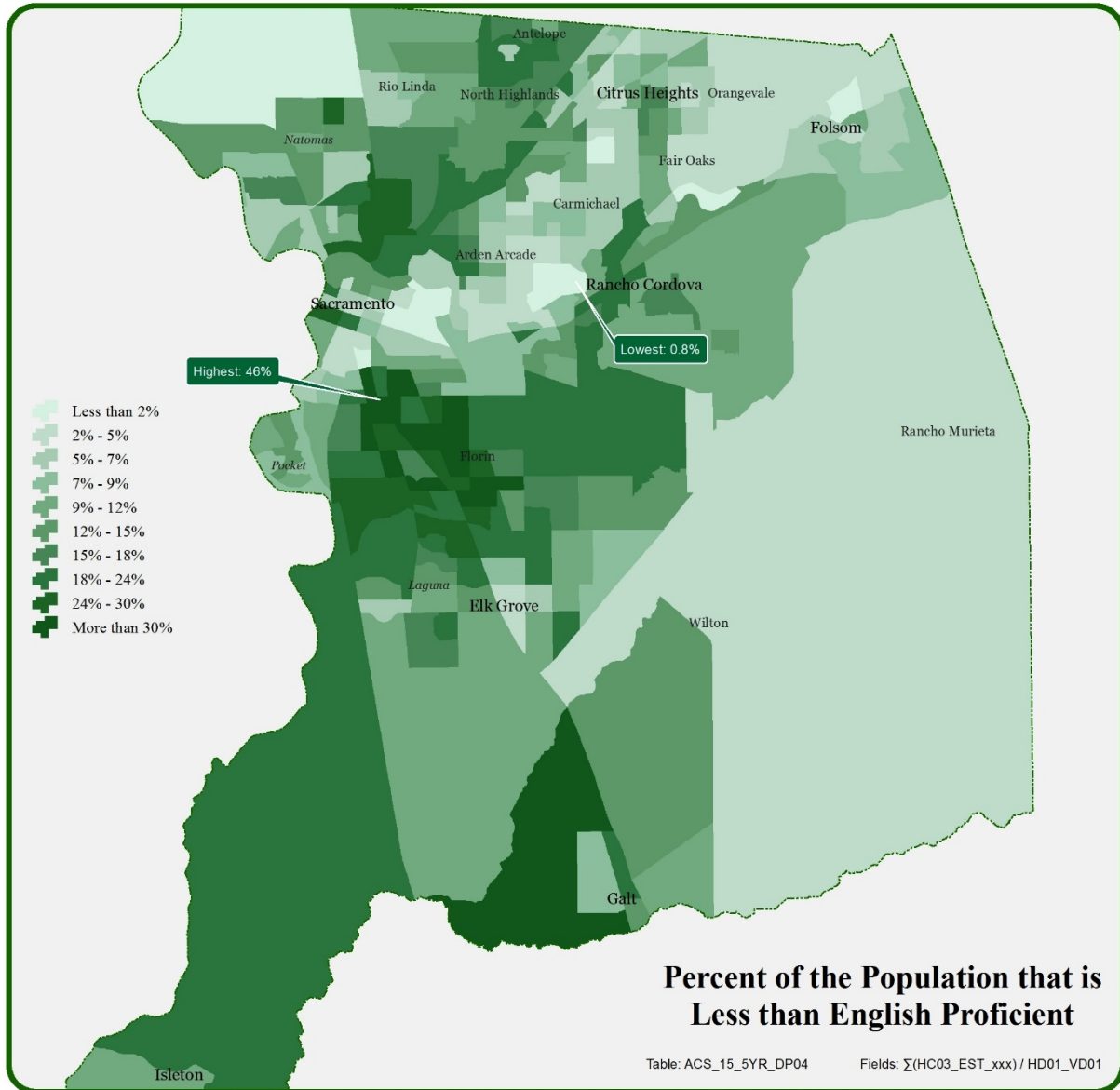
APPENDIX E - DATA MAPS

2) PERCENT OF POPULATION OVER 18 WITH DISABILITIES



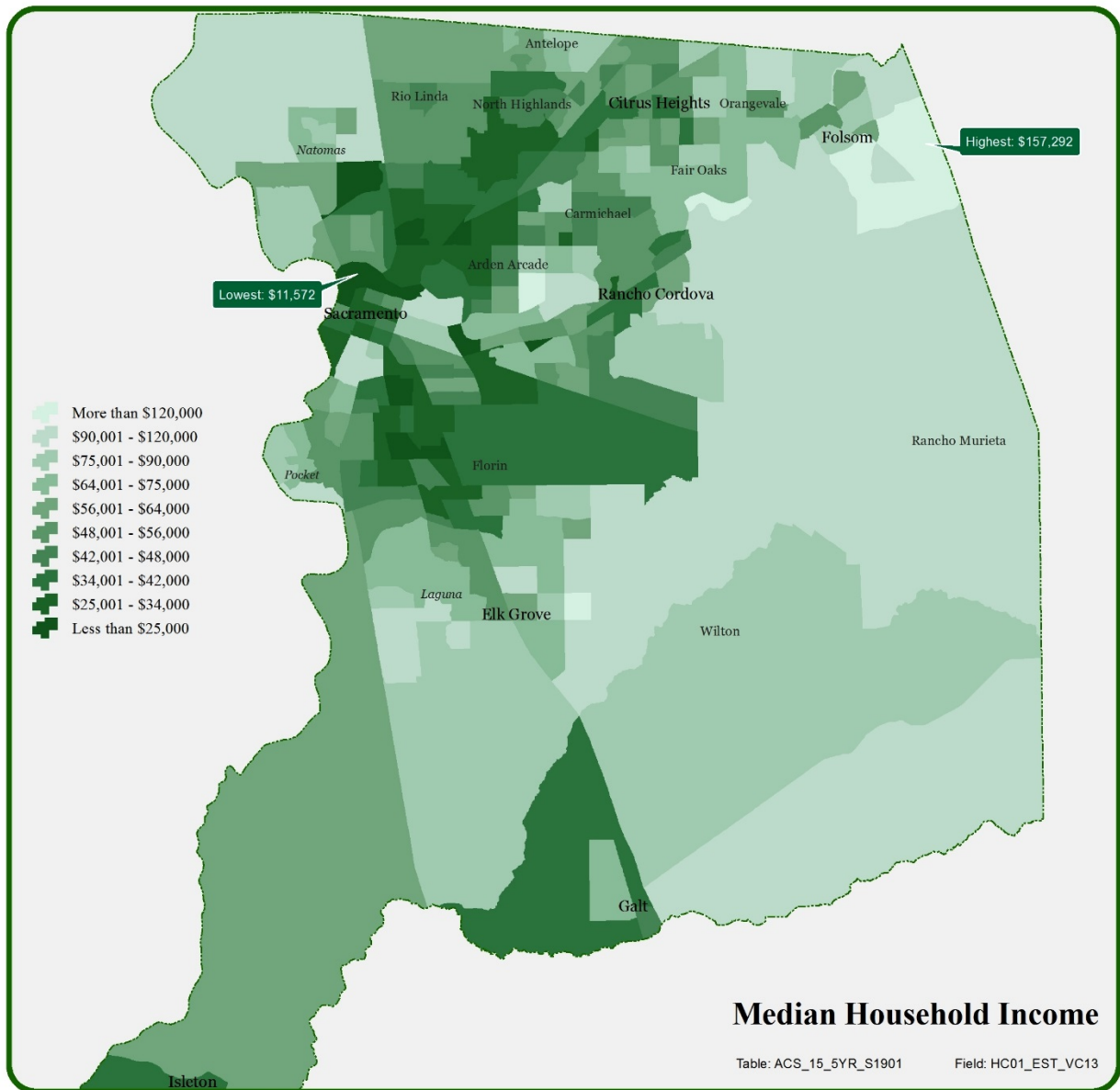
APPENDIX E - DATA MAPS

3) PERCENT OF POPULATION THAT IS LESS THAN ENGLISH PROFICIENT



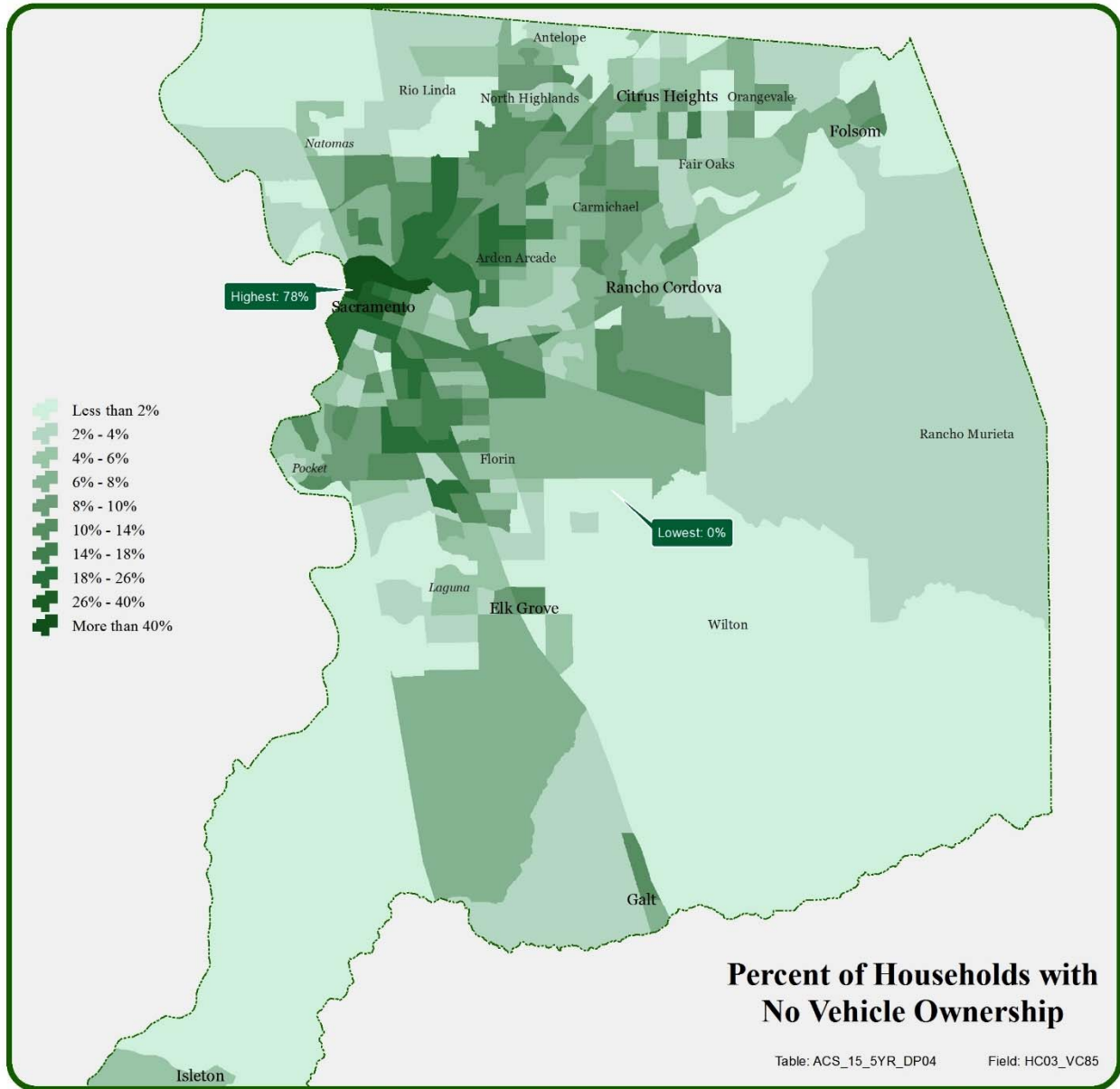
APPENDIX E - DATA MAPS

4) MEDIAN HOUSEHOLD INCOME



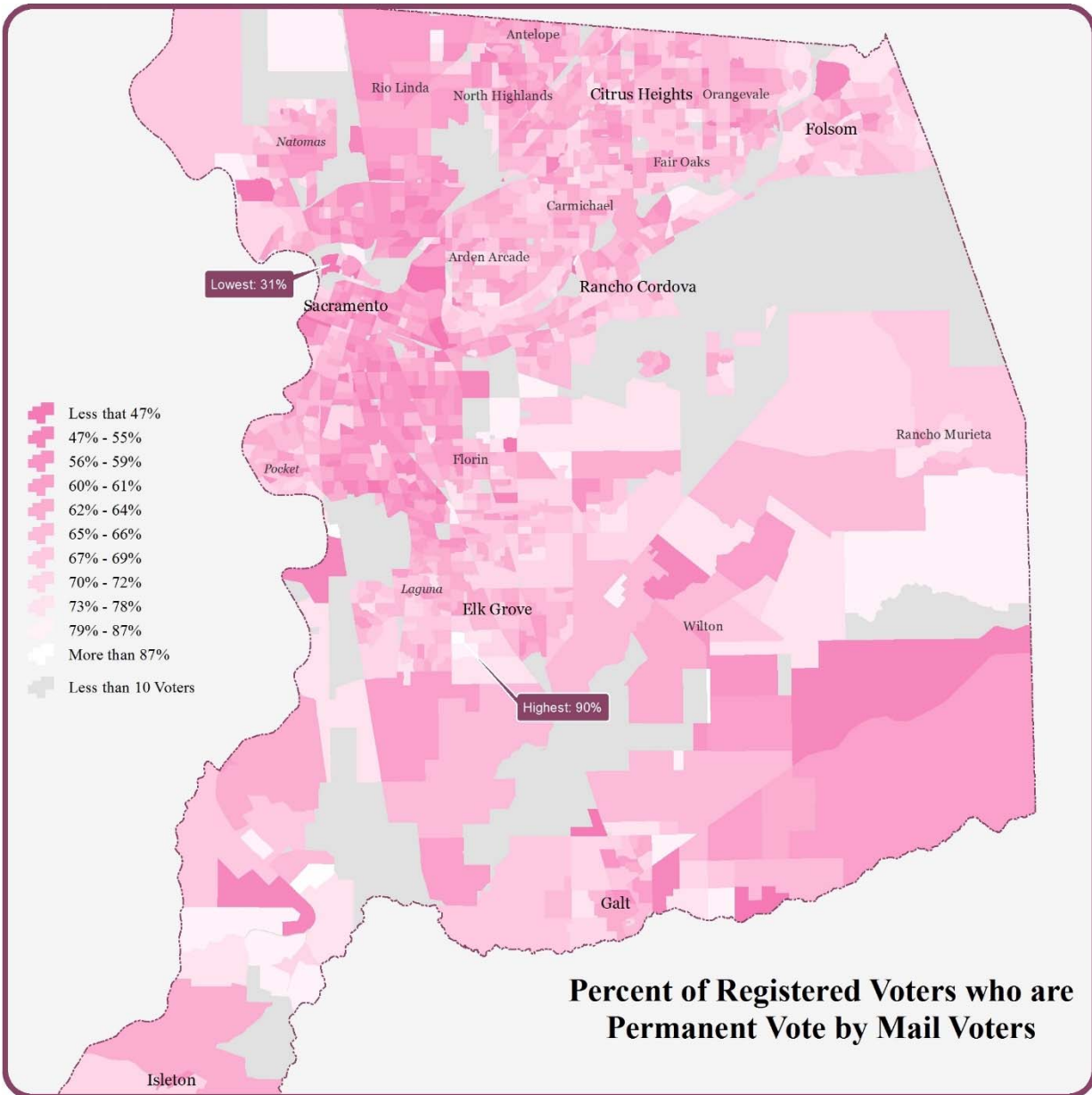
APPENDIX E - DATA MAPS

5) PERCENT OF HOUSEHOLDS WITH NO VEHICLE OWNERSHIP



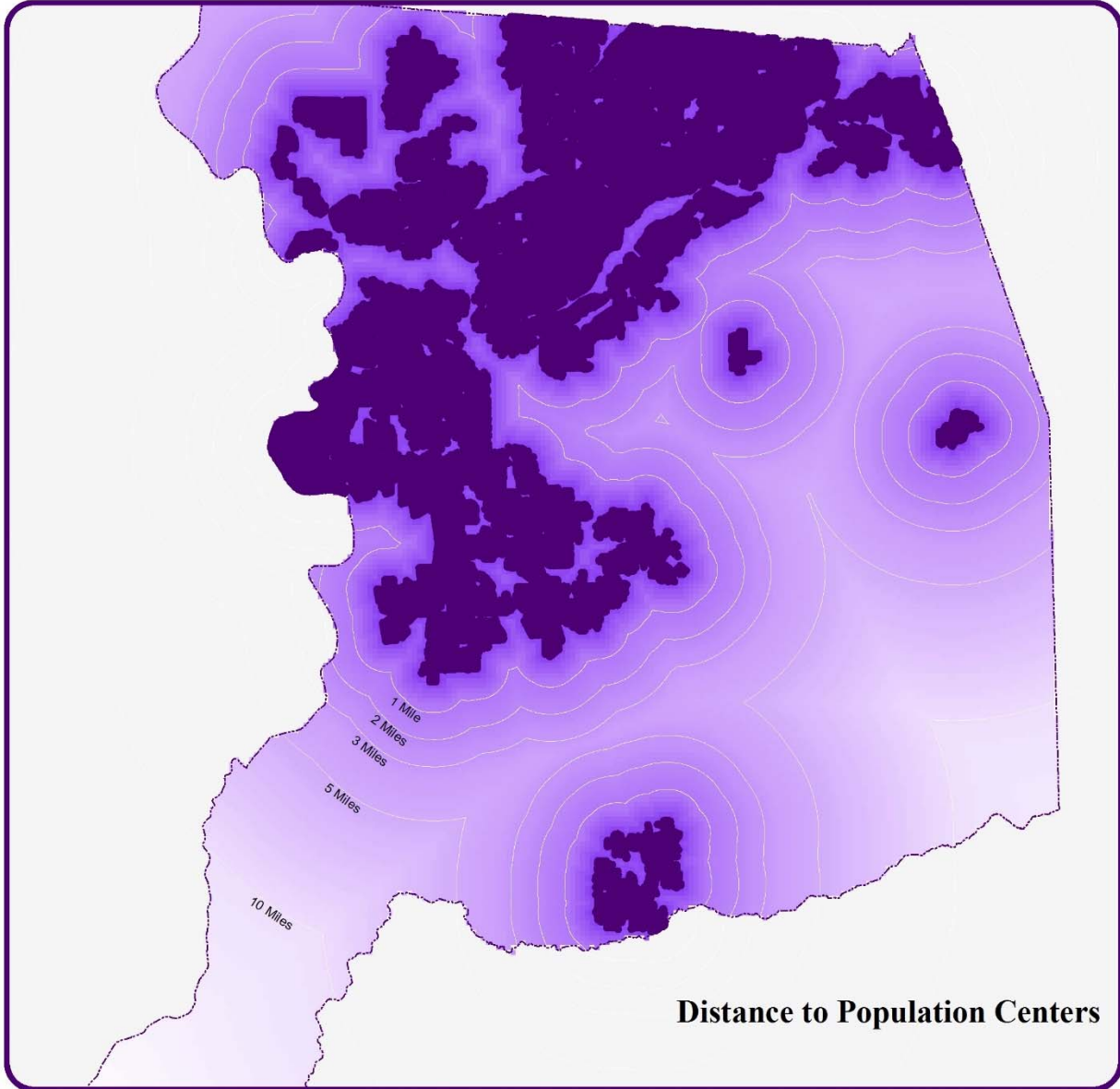
APPENDIX E - DATA MAPS

6) PERCENT OF REGISTERED VOTERS WHO ARE PERMANENT VOTE BY MAIL VOTERS



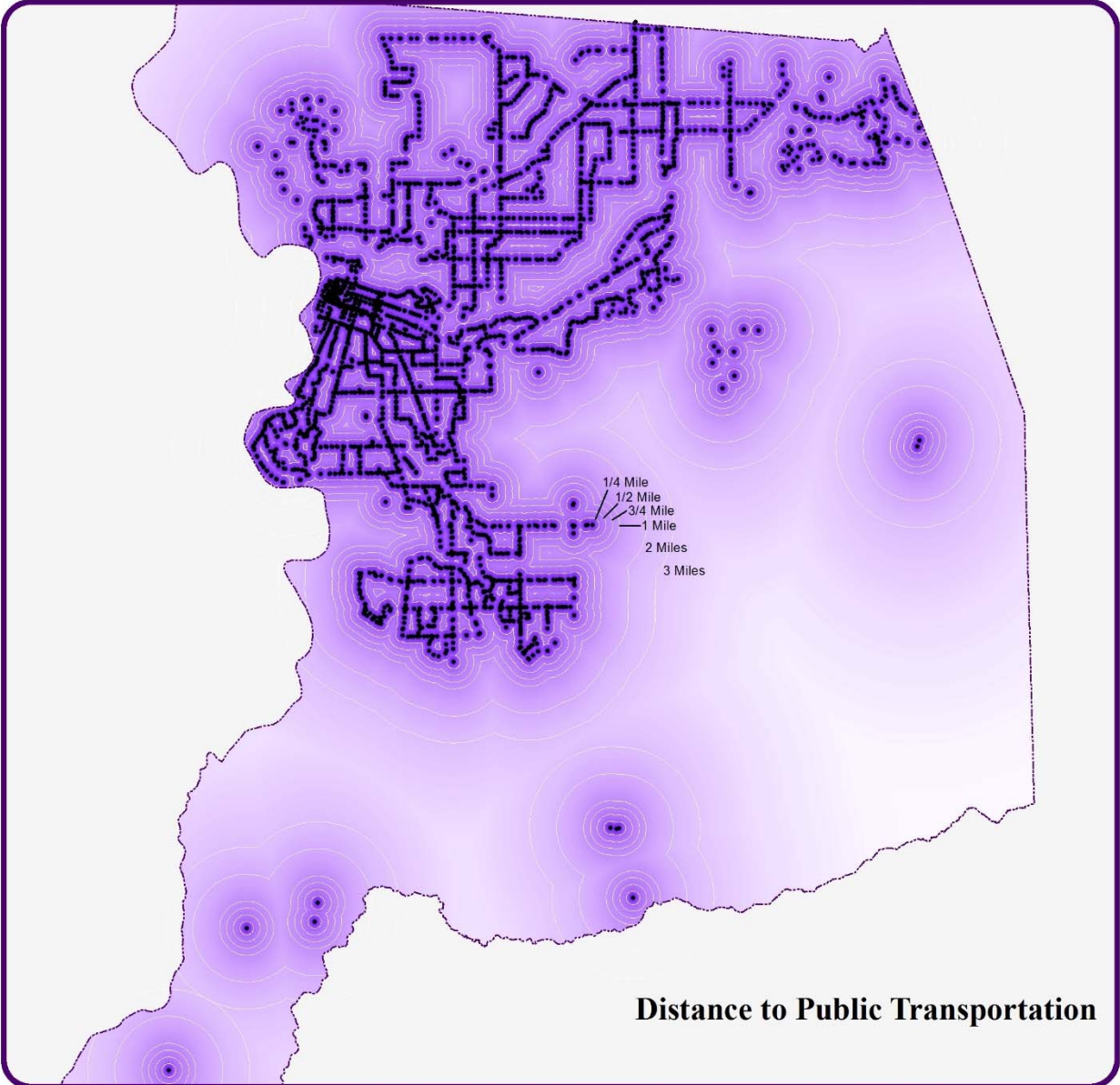
APPENDIX E - DATA MAPS

7) DISTANCE TO POPULATION CENTERS



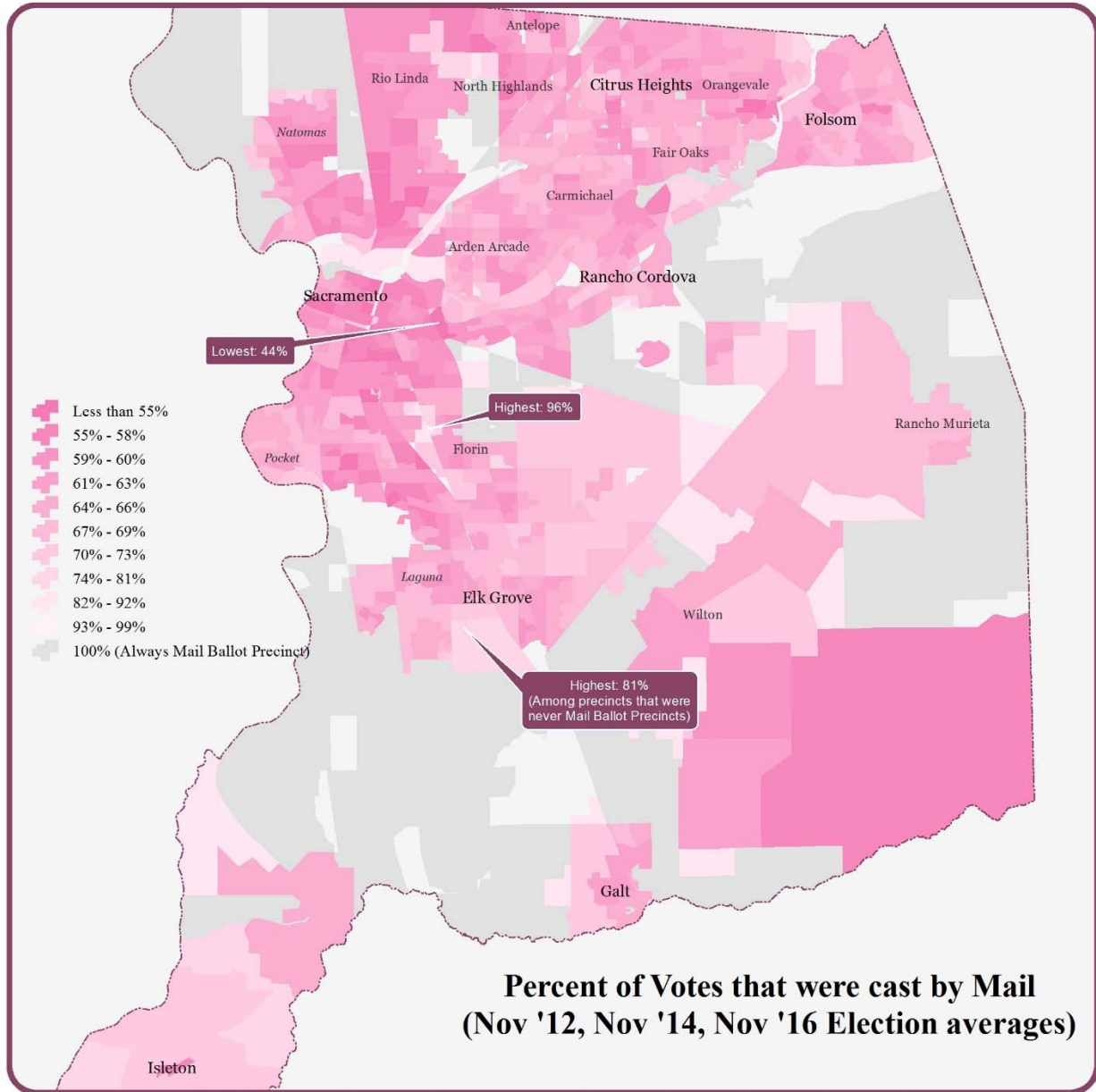
APPENDIX E - DATA MAPS

8) DISTANCE TO PUBLIC TRANSPORTATION



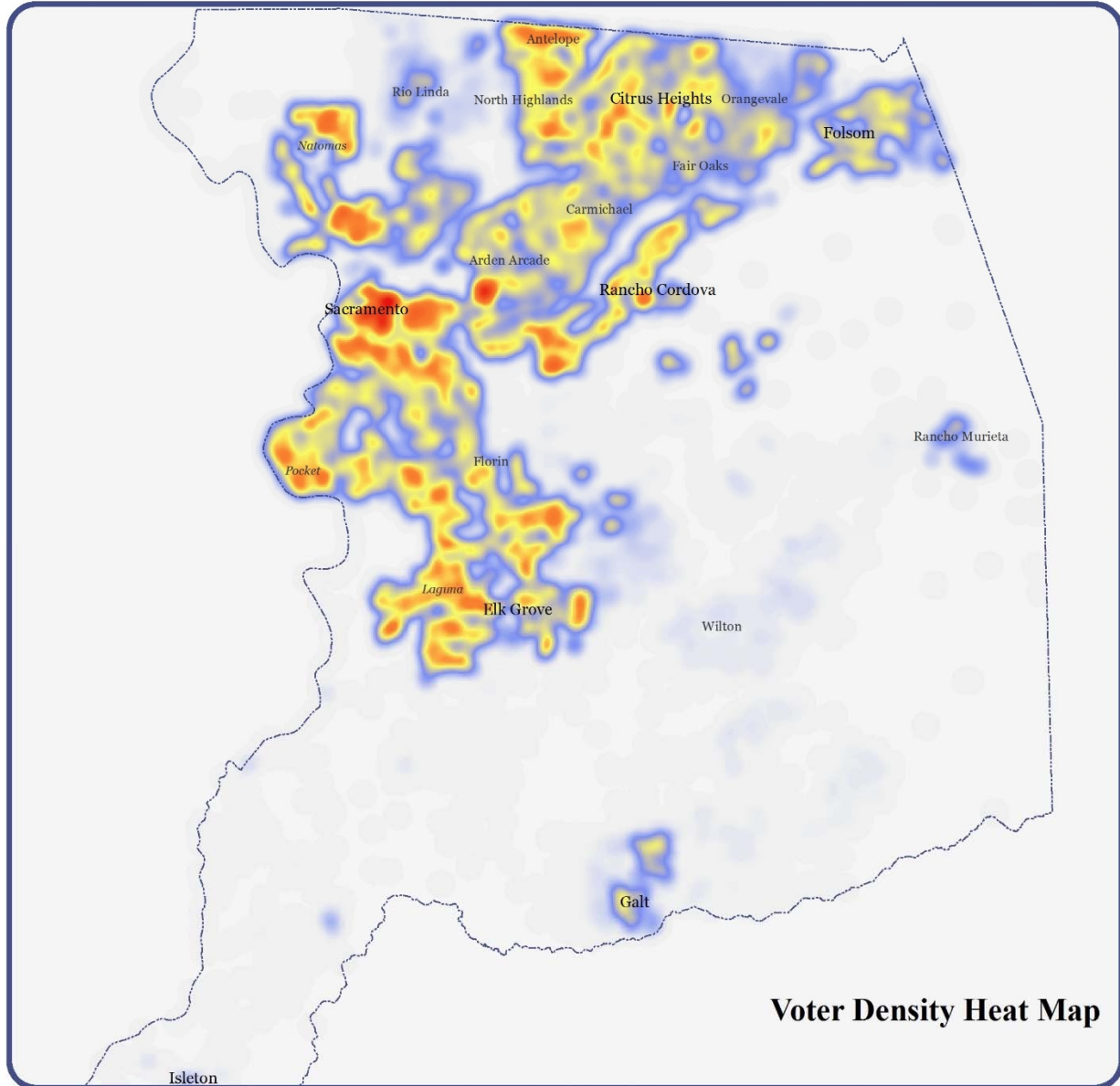
APPENDIX E - DATA MAPS

9) VOTE BY MAIL ACTIVITY



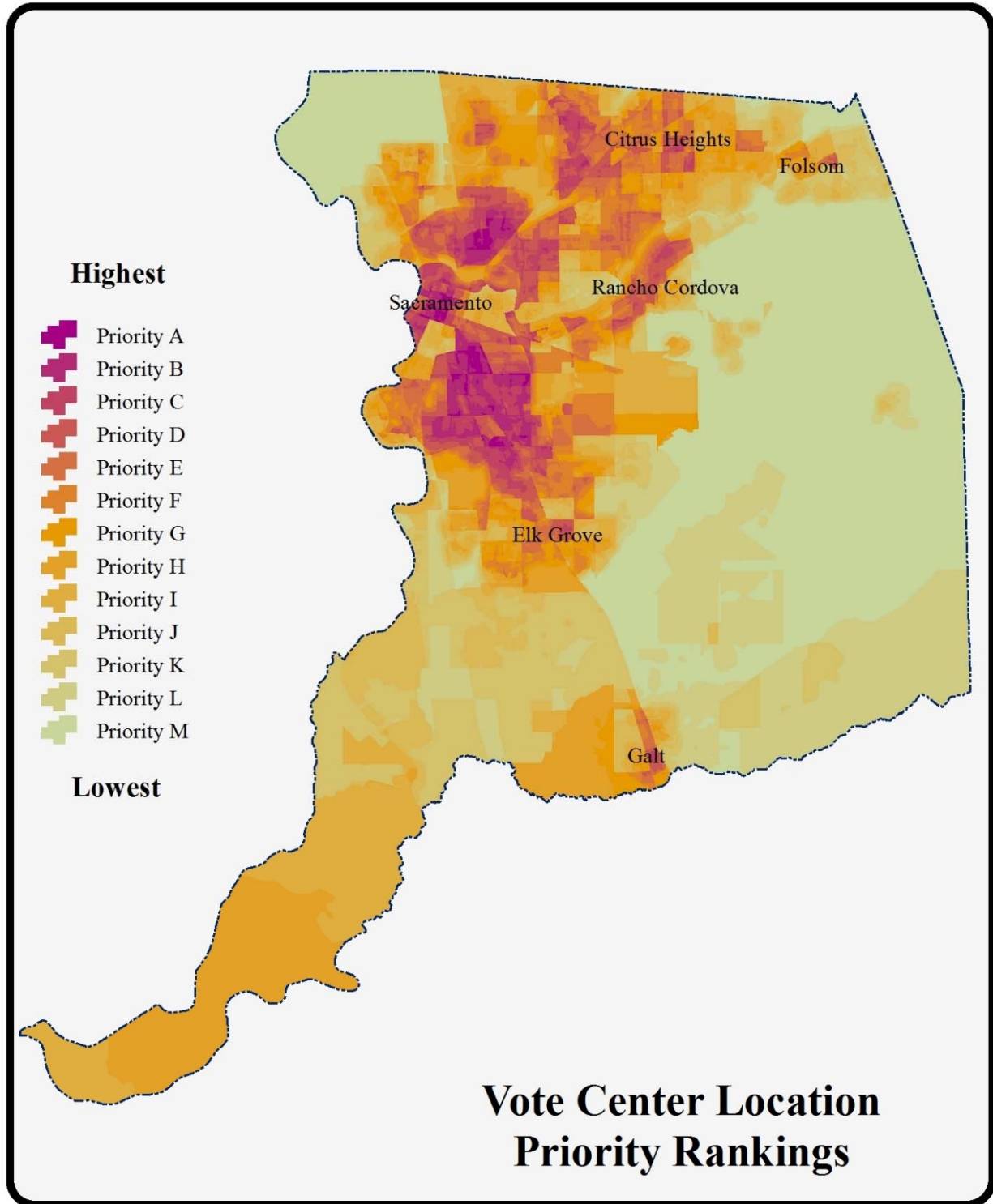
APPENDIX E - DATA MAPS

10) VOTER DENSITY (Heat Map)



APPENDIX E - DATA MAPS

11) COMBINED MAPS



APPENDIX F - VOTE CENTER LOCATIONS AND HOURS

All locations are surveyed and rated for usability prior to being selected as a Vote Center for an election. Surveying is an important first step in identifying locations that will best serve voters.

Vote Center Selection Criteria

Ideal Vote Center:

1. Provide a minimum of 30x30 ft secured voting area
2. Provide at least 25 free, off-street parking spaces for voters
3. Provide secured storage for voting equipment
4. Provide restrooms for Vote Center staff
5. Provide air conditioning and heating
6. Voting area is free of other activities while voting is taking place
7. Facility is already well known to the local community
8. Facility use is free
9. Facility is located in a priority area, as determined by the 14 criteria outlined in EC 4005
10. Facility entrance is located within 200 ft of an accessible public transportation stop or hub
11. On a scale of 1 through 5 (1 being poor, 5 being excellent), facility receives a 4 or 5 rating on each of the following:
 - Accessibility
 - Outside Lighting
 - Availability (ease of contact)
 - Interest
 - Location/Visibility
 - Parking

11 Day Location Selection (next step):

1. Evaluate inventory of available locations
2. Map out available locations. Map includes:
 - a. Pentamyriads (groupings of 50,000 voters)
 - b. 14 criteria layers, including public transportation stops
 - c. Ratings
 - d. Location ID
3. Look at available locations, ratings in each pentamyriad to ensure the sites are "equitably distributed"
4. Review paperwork for each potential site
 - a. Accessibility Review Form
 - b. Vote Center Survey Form
5. Select minimum of one location per pentamyriad and confirm use with 11 Day Facility Use Agreement

APPENDIX F - VOTE CENTER LOCATIONS AND HOURS

Accessibility Ratings (based on Polling Place Accessibility Checklist):

1. Polling Place/Vote Center has multiple accessibility concerns that cannot be mitigated and exceed “de minimus departures”
2. Polling Place/Vote Center has a major accessibility concern that cannot be mitigated; or one or two concerns just about the standard of “de minimus departures”
3. Polling Place/Vote Center has minor accessibility concerns that cannot be mitigated. This includes slopes/cross slopes a few tenths of a percentage point above standard or fall under the “de minimus departures”. All sites are automatically rated a 3 if there is no designated pedestrian access from property line.

As long as there at least one accessible path of travel, a location may receive a “3” rating depending on other barriers.

4. Polling Place/Vote Center has accessibility concerns that can be mitigated. Has “no” on checklists but these items can be mitigated. This includes adding signage, propping the door open, or using cones as detectable barriers. If the site has a property line POT, even if it is not accessible (excessive slope), it could possibly still be a “4” as long as the other POT (from ISA parking) is perfectly accessible.
5. Polling Place has no accessibility concerns; everything on the checklist is “yes”, including property line POT.

“De minimus departures” are allowances outside the state accessibility standards agreed upon between our department and the Sacramento County Disability Advisory Committee.

Parking Ratings

0. On-street parking only
1. Less than 10 spaces
2. 10-25
3. 26-50
4. 51-75
5. > 75

SACRAMENTO COUNTY ELECTION ADMINISTRATION PLAN 2018

APPENDIX F - VOTE CENTER LOCATIONS AND HOURS

Vote Center Locations and Hours

Vote Center selection is an on-going process. The table below will be updated as locations are confirmed for use as a Vote Center. This list will also be included in the County Voter Information Guide and will be available on the Election's website.

Note: All Vote Centers will be open on Election Day from 7 a.m. to 8 p.m. in addition to the days and hours listed in the following tables.

Current as of January 12, 2018

11-DAY VOTE CENTERS

LOCATION NAME	ADDRESS	DAYS / HOURS
Greater Sacramento Urban League	3725 Marysville Blvd Sacramento, CA 95838	8 a.m. to 5 p.m. Weds 5/30 - 8 a.m. to 6 p.m.
Citrus Heights City Council Chambers	6360 Fountain Square Dr Citrus Heights, CA 95621	8 a.m. to 5 p.m.
Murph – Emmanuel A M E Church	4151 Don Julio Blvd North Highlands, CA 95660	9 a.m. to 5 p.m.
Koreana Plaza	10947 Olson Dr, Suite 411 Rancho Cordova, CA 95670	9 a.m. to 5 p.m.
The California Museum	1020 O St Sacramento, CA 95814	9 a.m. to 5 p.m.
Oak Park Community Center	3425 Martin Luther King Jr Blvd Sacramento, CA 95817	9 a.m. to 5 p.m.
Unity of Sacramento Church	9249 Folsom Blvd Sacramento, CA 95826	9 a.m. to 5 p.m.
Asian Pacific Islander American Public Affairs Association (APAPA)	4000 Truxel Rd, Suite 3 Sacramento, CA 95834	9:30 a.m. to 5:30 p.m. Weekends and Memorial Day 5/28 8 a.m. to 4:00 p.m.

SACRAMENTO COUNTY ELECTION ADMINISTRATION PLAN 2018

APPENDIX F - VOTE CENTER LOCATIONS AND HOURS

Current as of January 12, 2018

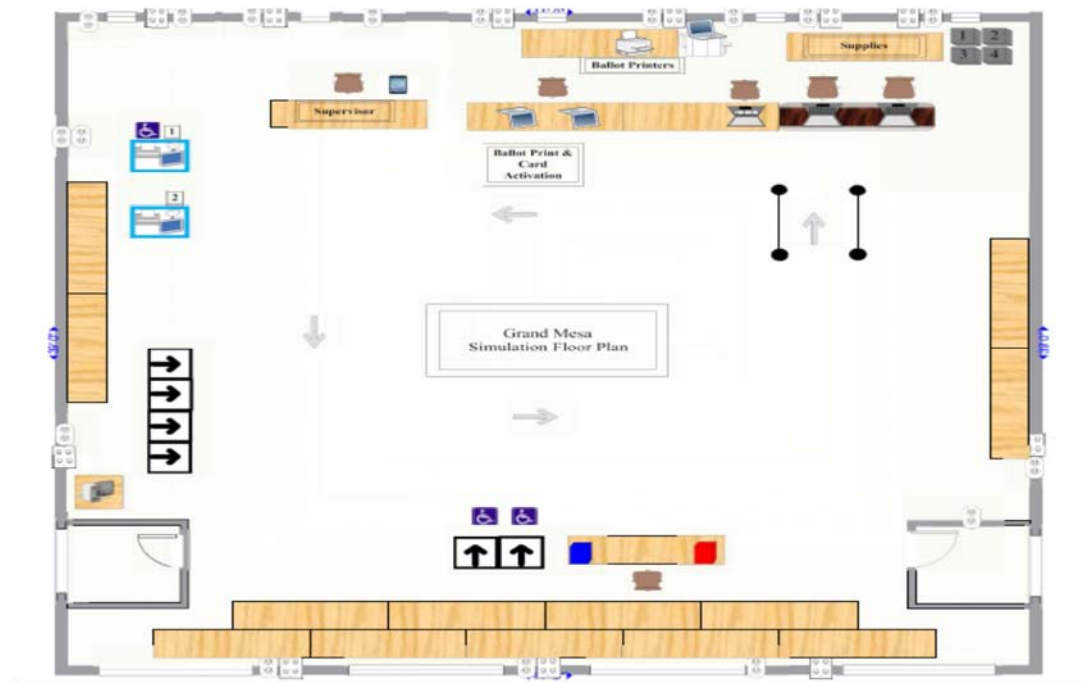
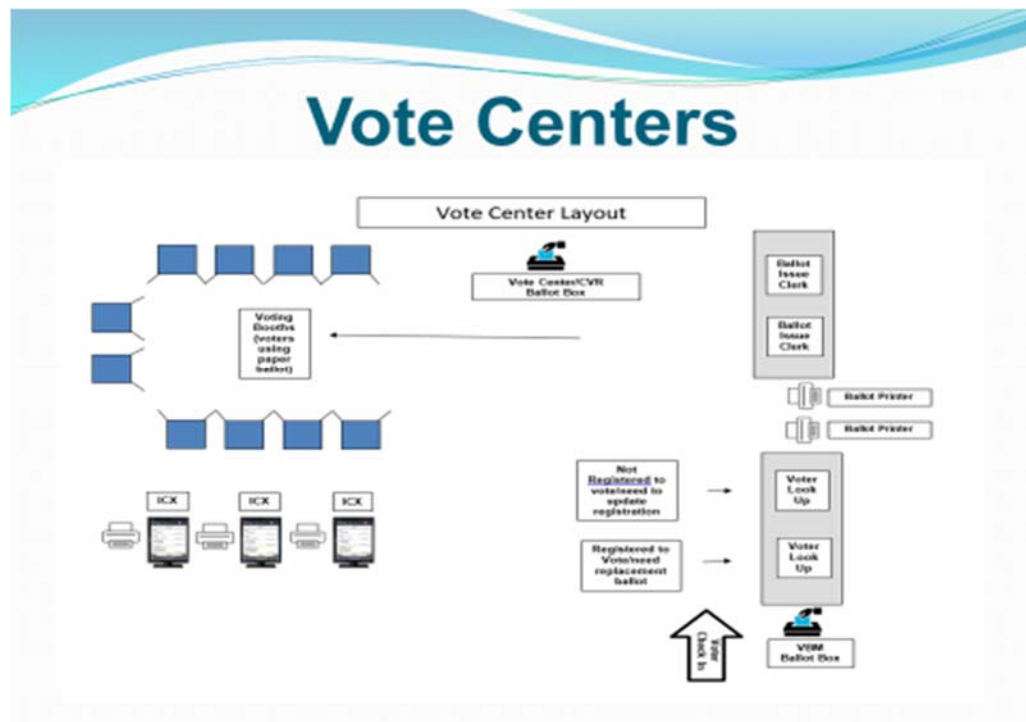
4-DAY VOTE CENTERS

LOCATION NAME	ADDRESS	DAYS / HOURS
Elk Grove City Council Chambers	8400 Laguna Palms Way Elk Grove, CA 95758	9 a.m. to 5 p.m.
Hagginwood Community Center	3271 Marysville Blvd Sacramento, CA 95815	9 a.m. to 5 p.m.
Sierra 2 Center	2791 24 th St Sacramento, CA 95818	8 a.m. to 4 p.m.
George Sim Community Center	6207 Logan St Sacramento, CA 95824	9 a.m. to 5 p.m.
Pannell Meadowview Community Center	2450 Meadowview Rd Sacramento, CA 95832	9 a.m. to 5 p.m.

APPENDIX G - VOTE CENTER SAMPLE LAYOUTS

The following Vote Center sample layouts show various room shapes and placement of voting equipment within the rooms. These are for illustrative purposes only. Actual layouts will ensure voting booths and accessible ballot marking devices are placed in a manner that allows a voter to mark their ballot independently and privately.

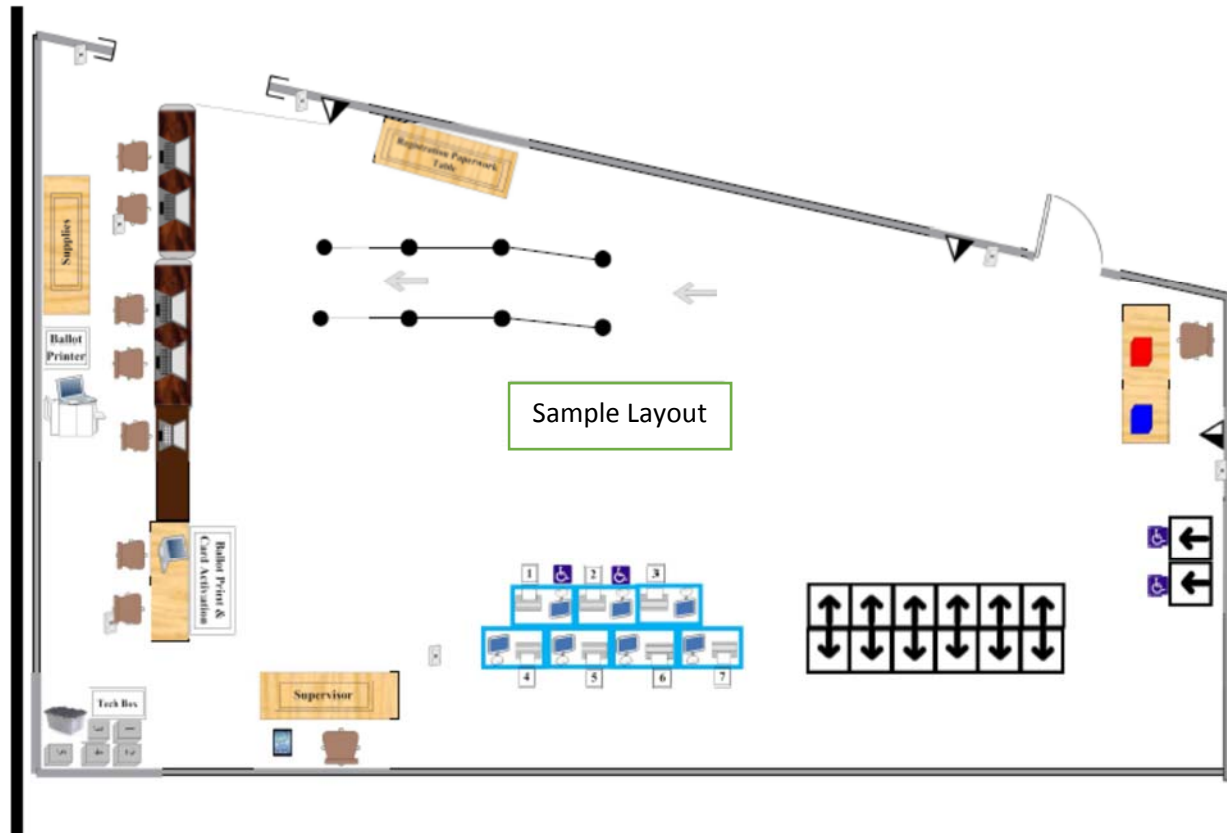
Sample Layout



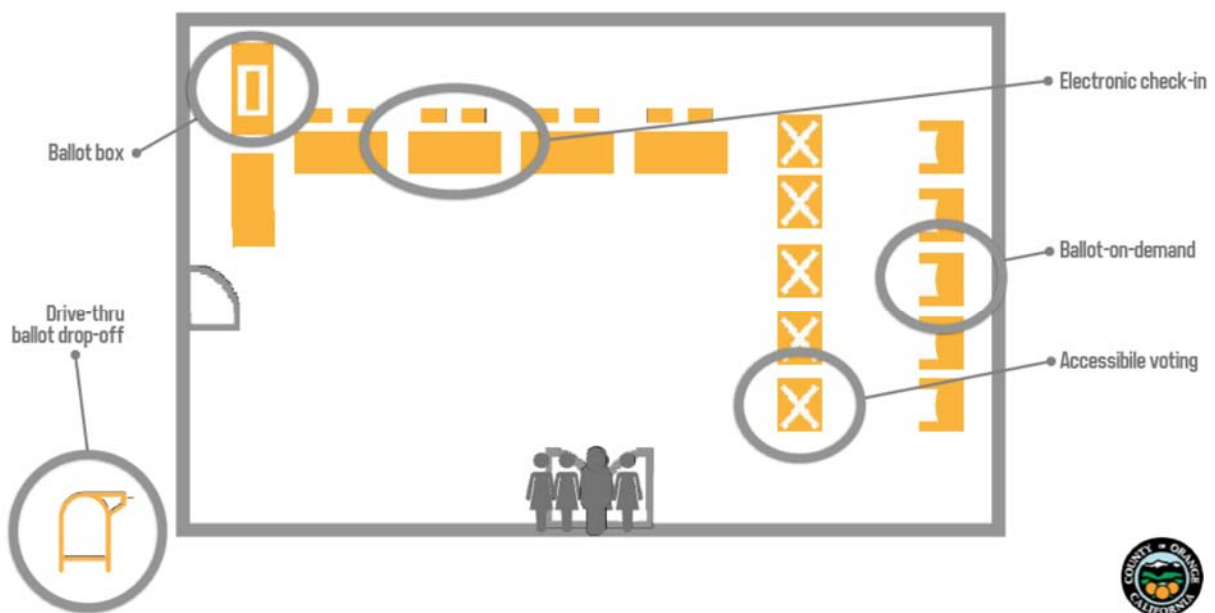
SACRAMENTO COUNTY ELECTION ADMINISTRATION PLAN 2018

APPENDIX G - VOTE CENTER SAMPLE LAYOUTS

Sample Layout - Denver Colorado



Sample Layout - Orange County



APPENDIX H - DROP BOX LOCATIONS AND HOURS

All locations are surveyed and rated for usability prior to being selected as a Drop Box for an election. Surveying is an important first step in identifying locations that will best serve voters.

Drop Box Selection Criteria.

Ideal Ballot Drop Box Location:

1. Provide a minimum of 5 x 5 feet for ballot box placement, ensuring there is enough clear space surrounding the box that meets ADA guidelines
2. Provide at least 15 free, off-street parking spaces for voters
3. Ballot box is in view of facility staff and continuously monitored
4. Facility is already well known to the local community
5. Facility is located in a priority area, as determined by the 14 criteria outlined in EC 4005
6. Facility entrance is located within 200 ft of an accessible public transportation stop or hub
7. On a scale of 1 through 5 (1 being poor, 5 being excellent), facility receives a 4 or 5 rating on each of the following:
 - Accessibility
 - Outside Lighting
 - Availability (ease of contact)
 - Interest
 - Location/Visibility
 - Parking

Ballot Drop Box Location Selection:

1. Evaluate inventory of available locations
2. Map out available locations. Map includes:
 - a. Grouping of 15,000 voters
 - b. 14 criteria layers, including public transportation stops
 - c. Ratings
 - d. Location ID
3. Review all availability and hours of the locations, ensuring the sites are “equitably distributed” and open on Election Day
4. Review paperwork for each potential site
 - a. Accessibility Review Form
 - b. Vote Center Survey Form

SACRAMENTO COUNTY ELECTION ADMINISTRATION PLAN 2018

APPENDIX H - DROP BOX LOCATIONS AND HOURS

Drop Box Locations and Hours

Drop Box selection is an on-going process. The table below will be updated as locations are confirmed for use as a Drop Box. This list will also be included in the County Voter Information Guide and will be available on the Election's website.

Current as of January 12, 2018

LOCATION NAME	ADDRESS	DAYS / HOURS
SACRAMENTO PUBLIC LIBRARIES (SPL):		
SPL - Arcade	2443 Marconi Ave. Sacramento, CA 95821	T/W 10-8 · Th 10-6 · F 1-6 · Sa 10-5
SPL - Arden-Dimick	891 Watt Ave. Sacramento, CA 95864	T 10-6 · W/Th 10-8 · F 1-6 · Sa 10-5
SPL - Carmichael	5605 Marconi Ave. Carmichael, CA 95608	T/W 10-8 · Th 10-6 · F 1-6 · Sa 10-5 Su 12-5
SPL - Central	828 I St., Sacramento, CA 95814	T 10-8 · W/Th 10-6 · F 12-6 Sa 10-5 · Su 12-5
SPL - Colonial Heights	4799 Stockton Blvd. Sacramento, CA 95820	T 12-8 · W/Th 10-6 · F 1-6 · Sa 10-5
SPL - Belle Cooleage	5600 South Land Park Drive Sacramento, CA 95822	T 12-8 · W/Th 10-6 · F 1-6 · Sa 10-5
SPL - Courtland-Nonie Wetzel <i>Near Bates Elementary School</i>	170 Primasing Ave. Courtland, CA 95615	M/T/Th/F 1-6 · W 1-8
SPL - Del Paso Heights	920 Grand Ave. Sacramento, CA 95838	T/W/Th 10-6 · F 1-6 · Sa 10-5
SPL - Elk Grove	8900 Elk Grove Blvd. Elk Grove, CA 95624	T/W 10-8 · Th 10-6 · F 1-6 · Sa 10-5
SPL - Fair Oaks	11601 Fair Oaks Blvd. Fair Oaks, CA 95628	T/W 10-8 · Th 10-6 · F 1-6 · Sa 10-5

SACRAMENTO COUNTY ELECTION ADMINISTRATION PLAN 2018

APPENDIX H - DROP BOX LOCATIONS AND HOURS

SPL - Franklin	10055 Franklin High Road Elk Grove, CA 95757	School breaks: M/W/F 10-6 T/Th 10-8 · Sa 10-5 School year: M/W/F 7:30-6 T/Th 7:30-8 · Sa 10-5 FOR SCHOOL BREAK/HOLIDAY SCHEDULE, VISIT SACLIBRARY.ORG
SPL - Galt-Marian O. Lawrence	1000 Caroline Ave. Galt, CA 95632	T 12-8 · W/Th 10-6 · F 1-6 · Sa 10-5
SPL Isleton <i>At Isleton Elementary School</i>	412 Union St., P.O. Box 517 Isleton, CA 95641	T/W/Th/F 1-6 · Sa 1-5
SPL - Martin Luther King, Jr.	7340 24th St. Bypass Sacramento, CA 95822	T/W 10-6 · Th 12-8 · F 1-6 · Sa 10-5
SPL - Ella K. McClatchy	2112 22nd St. Sacramento, CA 95818	T/Th 10-6 · W 12-8 · F 1-6 · Sa 10-5
SPL - McKinley	601 Alhambra Blvd. Sacramento, CA 95816	T 12-8 · W/Th 10-6 · F 1-6 · Sa 10-5
SPL - North Highlands-Antelope	4235 Antelope Road Antelope, CA 95843	T/W 10-8 · Th 10-6 · F 1-6 · Sa 10-5
SPL - North Natomas	4660 Via Ingoglia Sacramento, CA 95835	T/Th 12-8 · W 10-6 · F 1-6 · Sa 10-5
SPL - North Sacramento-Hagginwood	2109 Del Paso Blvd. Sacramento, CA 95815	T/Th 12-6 · W 12-8 · F 1-6 · Sa 10-5
SPL - Orangevale	8820 Greenback Lane Suite L Orangevale, CA 95662	T 12-8 · W/Th 10-6 · F 1-6 · Sa 10-5
SPL - Pocket-Greenhaven Robbie Waters	7335 Gloria Drive Sacramento, CA 95831	T/Th 10-6 · W 12-8 · F 1-6 · Sa 10-5
SPL - Rancho Cordova	9845 Folsom Blvd. Sacramento, CA 95827	T/W 10-8 · Th 10-6 · F 1-6 · Sa 10-5
SPL - Rio Linda	6724 6th St.	T 12-8 · W/Th 10-6 ·

SACRAMENTO COUNTY ELECTION ADMINISTRATION PLAN 2018

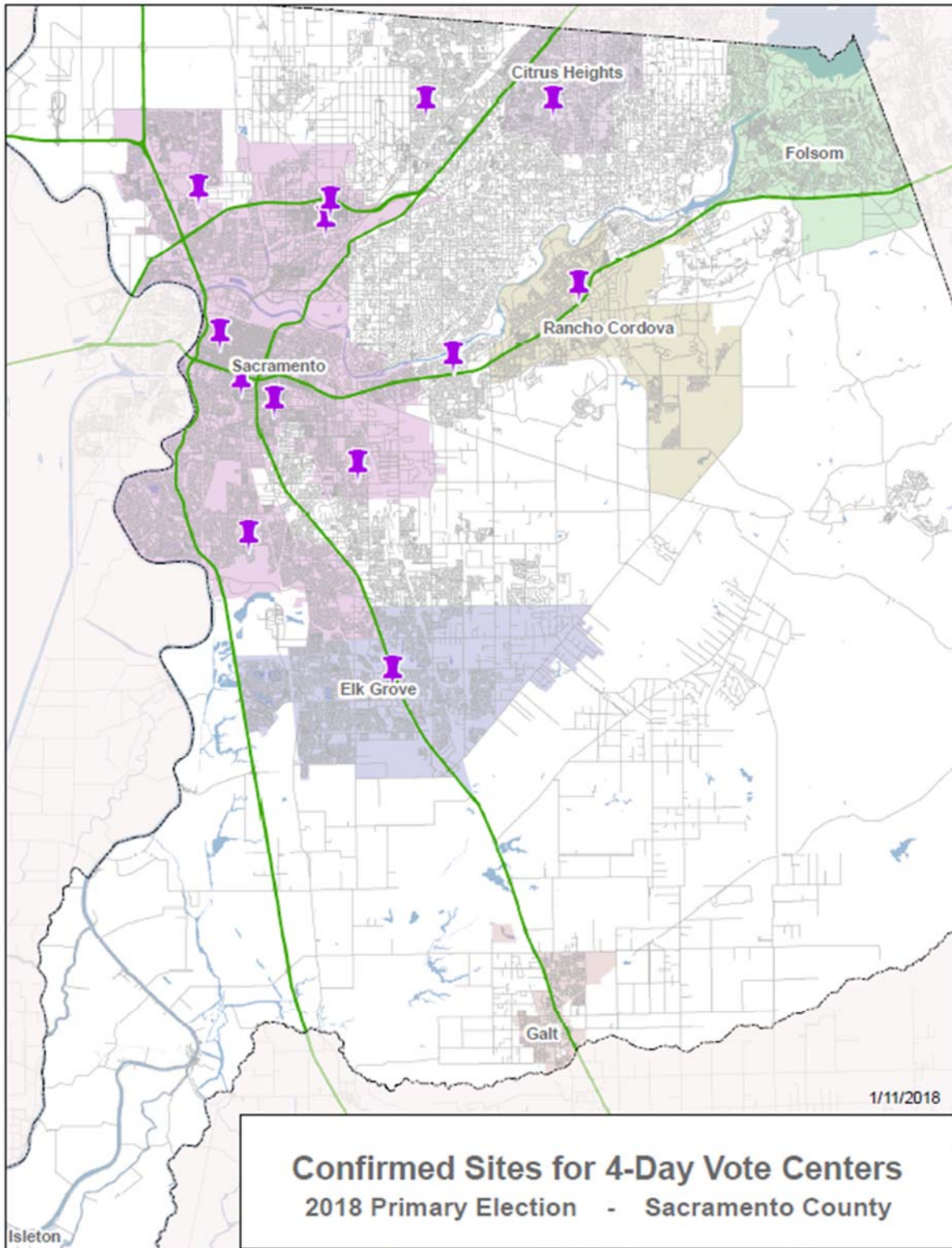
APPENDIX H - DROP BOX LOCATIONS AND HOURS

	Rio Linda, CA 95673	F 1-6 · Sa 10-5
SPL - South Natomas	2901 Truxel Road Sacramento, CA 95833	T/Th 10-6 · W 12-8 · F 1-6 · Sa 10-5
SPL - Southgate	6132 66th Ave. Sacramento, CA 95823	T/W 10-8 · Th 10-6 · F 1- 6 · Sa 10-5
SPL - Sylvan Oaks	6700 Auburn Blvd. Citrus Heights, CA 95621	T/W/Th 10-8 · F 1-6 · Sa 10-5
SPL - Valley Hi-North Laguna	7400 Imagination Pkwy. Sacramento, CA 95823	T 12-8 · W/Th 10-6 · F 1-6 · Sa 10-5
SPL - Walnut Grove	14177 Market St. Walnut Grove, CA 95690	T/W/Th/F 1-6 · Sa 12-5

APPENDIX I - LOCATION MAPS

Current as of January 12, 2018

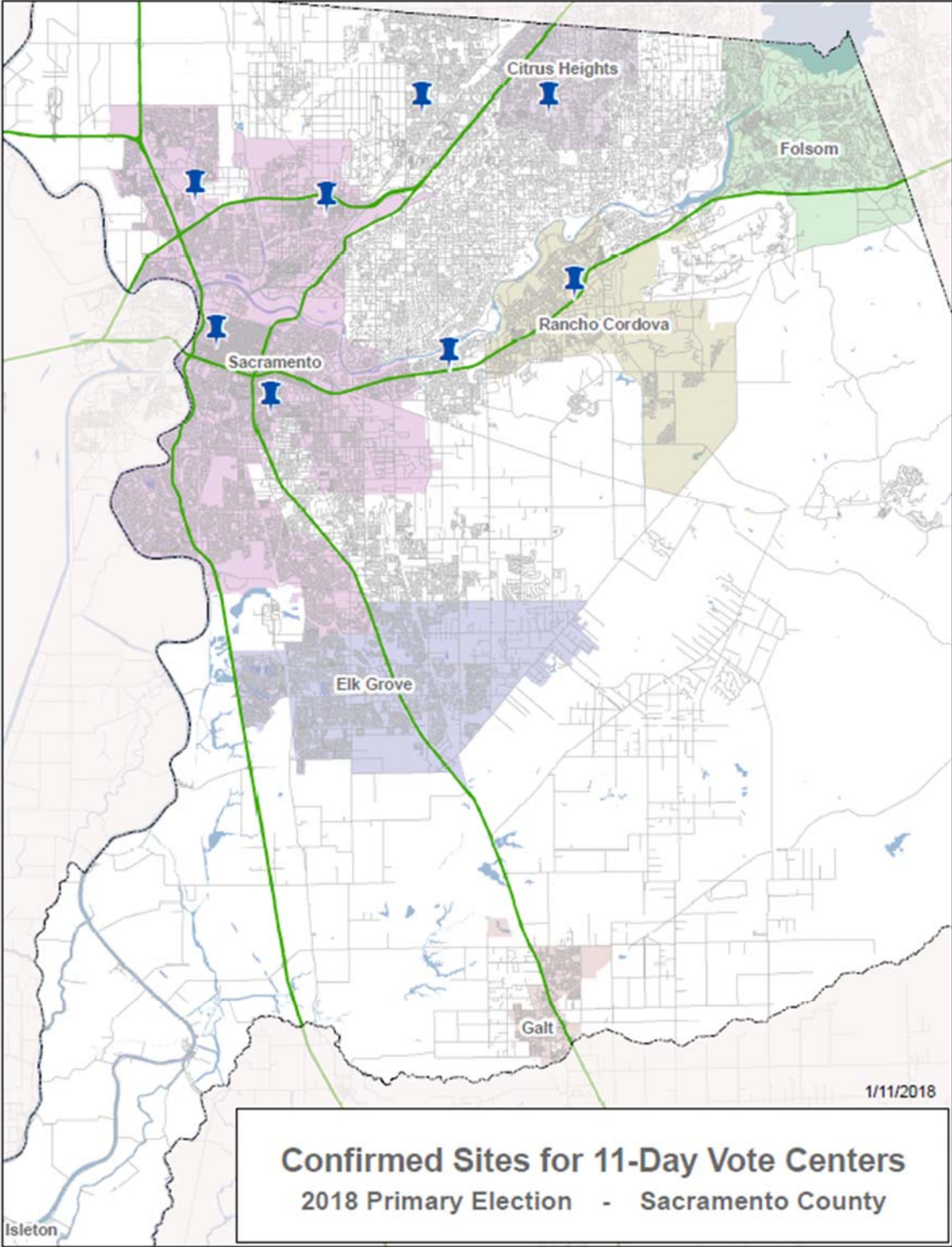
4-DAY VOTE CENTER LOCATION MAP



APPENDIX I - LOCATION MAPS

Current as of January 12, 2018

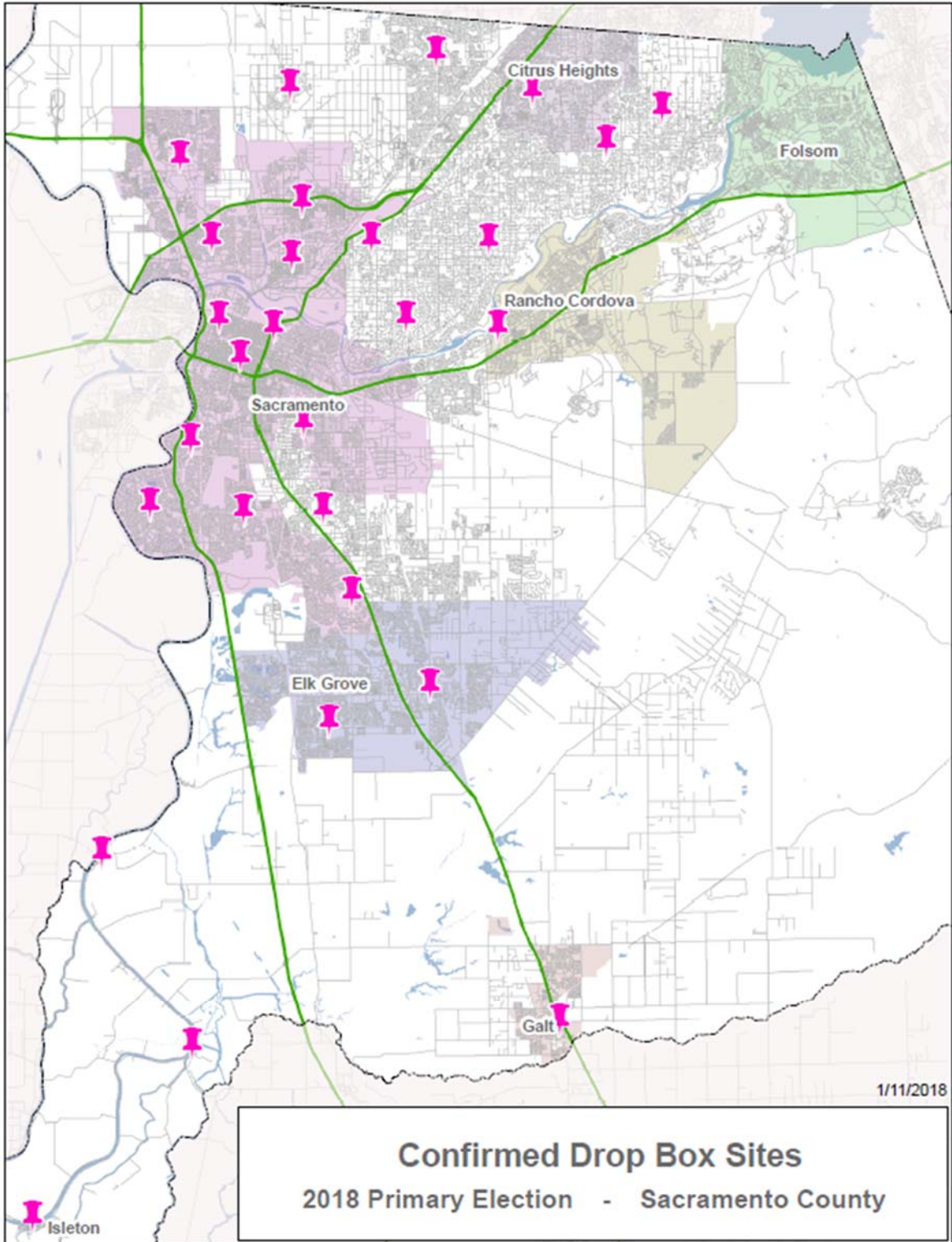
11-DAY VOTE CENTER LOCATION MAP



APPENDIX I - LOCATION MAPS

Current as of January 12, 2018

DROP BOX LOCATION MAP



SACRAMENTO COUNTY ELECTION ADMINISTRATION PLAN 2018

APPENDIX J - BUDGET RESOURCES AND COST COMPARISONS

VOTER EDUCATION AND OUTREACH FUNDING

§4005(a)(10)(I)(i)(VII)

The following table shows the advertising and voter outreach budgets for the 2016 elections, and the estimated funding for the VCA advertising and voter outreach requirements.

Activity	June 2016 Polling Place Election	November 2016 Polling Place Election	June 2018 FY 17/18 Initial Budget / Revised Budget	June 2018 Vote Center Election Estimated Costs
Advertising	\$17,975	\$24,500	\$32,000 / \$100,000	\$187,812
Voter Outreach	\$22,287	\$36,187	\$49,200 / \$600,000	\$701,434
SOS VCAEOP			\$98,000	

SHORT TERM AND LONG TERM COSTS AND SAVINGS

§4005(a)(10)(I)(v)

Sacramento County's voting system has reached end of life after more than 13 years of successful elections. A new voting system will be in place for the 2018 elections. The replacement of voting system complicates the comparison of short term and long term costs and savings. However, the following tables show the current costs in a Polling Place Model election with the existing system, and the costs to purchase or lease a new system in both a Polling Place Model election and a Vote Center Model election.

The table below shows the current voting system costs for POLLING PLACE elections:

Existing Voting System	Fiscal Year 2015/2016	Fiscal Year 2016/2017	Fiscal Year 2017/2018 (budgeted)
Voting System Support	\$334,533	\$321,810	\$323,692

SACRAMENTO COUNTY ELECTION ADMINISTRATION PLAN 2018

APPENDIX J - BUDGET RESOURCES AND COST COMPARISONS

The table below shows the new voting system estimated costs for VOTE CENTER elections:

Election type	# sites / # accessible units (includes growth)	One-time Equipment Purchase (estimated)	Annual Equipment Lease (estimated)
Polling Place Model	600 / 800	\$11,209,422	n/a
Vote Center Model	90 / 315	\$ 2,003,544	\$502,100
Cost difference		\$ 9,205,878	n/a

APPENDIX K - SECURITY PLAN

Election Security and Action Plan

This plan gives guidance in the event of an emergency in Voter Registration and Elections. The plan has two purposes:

- To protect lives and property
- To preserve the organizational structure and ensure the continuing or early resumption of essential service.

ELECTION SECURITY

An effective emergency plan requires considerable thought: research, discussion and difficult choices should be made now. In addition to researching solutions, emergency preparedness involves identifying potential catastrophes. No geographical area is immune from emergencies. These also require planning in advance to avoid future confusion and misconceptions.

This document begins with an overview of basic security and planning concepts, and how they relate to election security. Following this is a more detailed document on the requirements for election day/night security.

THE BASICS

Security for an election is a combination of preservation and protection of *personnel, property and information assets*.

Security can also be broken down into three fundamental principles:

- Deterrence
- Detection
- Recovery

DETERRENCE

Personnel deterrence involves having all authorized personnel readily identifiable. Voter Registration and Elections (VRE) will use name badges with pictures for all permanent employees. Temporary employees will have a bright yellow badge without their picture. Visitors are required to register when entering the facility and are to wear the dated "visitor" badge while on the premises. Election night workers will be given color coded wrist bands to wear.

Property deterrence includes placing physical barriers and controlling access to sensitive locations. VRE will place crowd control barriers where appropriate. This includes establishing a ballot counting reviewing area for media and the public which will not impede the processing of ballots on election night. C-Cure door locks will be placed on VRE's most sensitive rooms and access will be controlled, monitored, and recorded during all election periods. Where security is most critical, such as in the ballot counting and storage areas, cameras have been installed so activity can be monitored and recorded.

APPENDIX K - SECURITY PLAN

Information Assets deterrence is associated with changing passwords frequently. VRE generates and manages user log reports for the department's computer systems. Firewall protections are updated on a regular basis as required by County standards. Network access is restricted to authorized personnel only. All personnel who are granted access are required to complete the required County authorization and agreement forms.

DETECTION

Personnel breach detection happens when, as an example, an unidentified person fails to sign in when requested or does not wear a visitor badge. Any visitor without the appropriate visitor badge will be requested to return to the lobby and complete the sign-in process or they may be required to leave the facility. Permanent and temporary staff that lose their employee badge will be required to pay a fee to obtain a replacement badge.

Property breach detection is associated with a broken fence, non-identifiable vehicles, or unauthorized entrance into a secure room.

Information Assets breach detection can be determined by unauthorized use of passwords, a firewall violation, or unauthorized network access.

RECOVERY

Recovery is the ability to repair a detected breach and return to a planned environment.

Personnel recovery can be as simple as assigning a badge to a person that does not have one to having an unauthorized individual arrested for trespassing.

Property recovery may involve mending broken fences, redirecting unauthorized vehicles, or conducting a search of a room that has had an unauthorized network access.

Information Assets recovery could run the gamut from identifying and noting security breaches to a full investigation of firewall violations or unauthorized network access.

INTERDEPARTMENTAL COMMUNICATION

Partnerships are crucial to success. A spirit of cooperation goes a long way to break down communication barriers in any emergency situation. VRE has met with:

- The Department of Homeland Security (DHS) which includes both the Sheriff's department and FBI staff, to access the department's security plan.
- The Countywide Services Agency's (CMO), who is responsible for immediate media notification of any issues that arise during the course of the election.
- The Department of Technology (DTECH) for computer and telecommunications support in the event of any type of system failure.

APPENDIX K - SECURITY PLAN

SECRETARY OF STATE DEDICATED SECURITY CONTACT NUMBERS FOR ELECTION DAY

On site Security Command Center 24/7 Station

916-657-2166

These numbers are specifically for the sole purpose of reporting any voting period security issue that needs to be immediately brought to the attention of state officials (the Office of Homeland Security, the Office of Emergency Services, or VRE).

EMERGENCY PREPAREDNESS PLAN

Groups need to communicate during an emergency and will have the ability when the need arises

COMMUNICATIONS WITH VOTE CENTERS

All Precincts Operations phone bank staff will have a list of vote center locations, landline telephone numbers (if available), and cell phone numbers for each vote center and each of the coordinators. This information is vital to law enforcement and emergency responders. A phone tree will be used to ensure all polls have the information necessary for responding to the specific emergency or issue. This could be anything from keeping the polls open past 8 p.m. on Election Day to providing additional ballot stock to one or more vote centers.

COMMUNICATIONS WITH THE MEDIA

A media center will be established on-site during the voting period that will be staffed by the VRE's media officer. This will enable immediate information sharing between the media and our office on any issue or emergency that may arise during the election.

COMMUNICATIONS WITH IT STAFF

IT staff will establish a phone bank during the voting period specifically for assisting vote centers with voting system problems. This phone bank will be available all hours a vote center is open and from 6 am through 9 pm on Election Day. The contact number will be provided in the vote center training manual and to office staff.

COMMUNICATIONS WITH SECURITY

Management staff will be provided an emergency contact phone list to be used to contact emergency personnel, such as the Sheriff, Fire Department, and Homeland Security. Any contact will also be reported to the County Executive, CSA Agency Administrator and the Board of Supervisors. In addition, any election-related emergency will be reported to the Secretary of State's office.

ORDER OF EMERGENCY NOTIFICATION

VOTE CENTER EMERGENCY

In the event there is an emergency that affects the operation of the Vote Centers or ballot drop box locations, both the Precinct Operations phone bank and the IT phone

APPENDIX K - SECURITY PLAN

bank will be utilized to contact all the technical support rovers, Ballot Transporters, and/or Vote Center Inspectors and inform them of the emergency and the actions they are to take. The Media Officer will work with the Registrar to prepare a statement for the media as well as an information alert to be sent to the Board of Supervisors, the County Executive and the Chief Deputy County Executive.

LAW ENFORCEMENT EMERGENCY AT THE OFFICE

In the event that there is a situation requiring the immediate intervention of an emergency responder (sheriff, fire, ambulance, etc.), the first action is to call 9-911 and report the emergency. Then, refer to your emergency procedures manual for the proper way to handle the specific emergency. Alert any staff that may be in the area of the emergency, as well as, the Facility Coordinator and the Registrar and the Media Officer. The Facility Coordinator will take the necessary steps to address the emergency including evacuating the facility if necessary. The Media Officer will provide information to the media regarding the emergency and the County's response. The Registrar and Media Officer will prepare an information alert to be sent to the Board of Supervisors, the County Executive and the Administration Services Agency.

VOTING PERIOD / ELECTION DAY EMERGENCY PLAN

GENERAL DIRECTIVES

- The safety and protection of individuals is the highest priority
- Preservation of ballots, equipment and facilities is the second priority

OFFICE SECURITY

- The working areas of the office are to be locked at all times except during regular business hours and at times directed by the Registrar
- Because the warehouse is used for the security of election equipment, records and ballots, the warehouse area of the department is to be locked at all times except when authorized staff are in the area
- To report any break ins, notify the Registrar and the Safety Coordinator, and call Facilities Management at 916-875-6221 or the Sheriff's Department

BALLOT SECURITY

- All ballots, including voted, spoiled, and unused ballot stock, are to be secured in one of the appropriate ballots storage facilities. Each facility has an intrusion alarm and video surveillance camera
- No ballot may be left in an unsecured area unless two or more employees of VRE are present
- If any ballots are missing or unaccounted for, the Registrar must be advised immediately
- Ballots being transported to/from designated Ballot Drop Box locations will be secured and transported in accordance with Secretary of State Ballot Retrieval Regulations.

APPENDIX K - SECURITY PLAN

- Ballot stock will be recorded using logs as outlined in the Secretary of State Ballot Printing Regulations and all ballots will be accounted for during the canvass period.

VOTE CENTERS

- In the event of an emergency in a Vote Center in which human life is endangered, the incident must be reported immediately to the proper authorities, through the 911 call center
- At an appropriate time, VRE must be advised of the emergency situation and the steps taken to respond to the emergency
- If necessary, VRE will take necessary steps to open an alternate voting site for the affected Vote Center to allow voting to continue with the least amount of interruption possible. Any actions, particularly during a statewide election or an election involving a state office, should be coordinated through the Elections Division of the State, the County Executive and/or Board of Supervisors and other appropriate authority including VRE's Media Officer.

ELECTIONS OFFICE

- In the event of an emergency in which human life is endangered, the incident must be reported immediately to the proper authorities, through the 911 call center and to the Registrar and the Department Safety Officer
- Other emergencies or situations must be reported to the Registrar, Department Safety Officer and appropriate manager
- If evacuation is ordered, even during ballot counting, everyone must evacuate immediately and report to the designated staging area

WHAT IF'S ON ELECTION DAY

Planning means identifying the "what-ifs", and then taking measures to reduce the unknowns of how to respond. What if you were to receive a phone call on Election Day that there was a bomb in one of your vote centers, what would you do?

What if you had to move one of your Vote Centers on or before the voting period / Election Day, how would you do it?

The emergency procedure should include:

- Halt all voting immediately
- Evacuate the facility as quickly as possible
- People who are waiting to vote shall not be given ballots
- Voters who have voted ballots shall deposit them in the ballot box
- Unmarked ballots may be returned to the Election Officer at the Vote Center location
- Anyone in a voting booth should be encouraged to finish as quickly as possible
- Election Officers shall seal all ballots that were cast before the declaration of the emergency, in the usual manner followed at the close of polls.

APPENDIX K - SECURITY PLAN

- Election Officers should retain all the voted ballots from a ballot box, including Vote by Mail and Provisional ballots, a check-in laptop, and the blank ballot stock with a Ballot on Demand printer, if possible, when evacuating
- Election Board members shall follow instructions from the Election Office, Technical Support teams or Law Enforcement
- These instructions may include complete evacuation of the facility and establishing a temporary Vote Center in a nearby location, with directional signage (as available) to alert voters of the change in location

Remember the safety of the staff, Election Officers, and the voters must always be the first priority. Emphasize to your election workers that their safety always comes first.

APPENDIX K - SECURITY PLAN

WHAT TO DO IF SOMEONE TRIES TO TAMPER WITH THE VOTING EQUIPMENT

Immediately remove the person from the Vote Center and if possible detain them. Have another Election Officer contact the Precinct Operations phone bank and alert them of the situation. VRE staff will contact the sheriff's department and will have a new voting unit delivered to replace the unit that was tampered with. Have all voters who were waiting to vote place their ballots in the auxiliary bin until the new unit arrives.

IF AN EMERGENCY KEEPS THE VOTE CENTER(S) FROM CONTACTING THE OFFICE DURING THE VOTING PERIOD

In the event that the VRE office is unable to be reached during the voting period (loss of telephone service, forced emergency evacuation, etc.), election officials should use the precinct operations staff cell phones. The Registrar, Facility Coordinator and Media Officer will be alerted to any emergency affecting VRE office communications and will work with County offices and the media to make the public aware of the issue and work towards a resolution of the emergency.

ELECTION NIGHT SECURITY

- The Sheriff will be contracted to provide protective services for the VRE office and election night personnel
- All parking around the perimeter of the building will be restricted
- All staff members, the media and election night workers must wear ID at all times
- Key VRE staff members will have cell phones with them on election night
- Sheriff or local City Police protective services may be at offsite receiving centers, as needed
- There will be restricted access during operations at the VRE office
- VRE will work with DTECH to perform a sweep of the facility and surrounding area for any wireless activity. This sweep may be a one-time operation or may continue throughout election night
- DTECH will be on-call to assist with any computer or telephone related problems or emergencies
- Media may be asked to announce any wireless devices upon arrival

APPENDIX K - SECURITY PLAN

VBM Emergency Procedures

SECURITY MEASURES TO PRESERVE ELECTION

In the event of an emergency requiring building evacuation, these procedures are to be followed:

- The Vote by Mail Manager will ensure that all Vote by Mail staff is accounted for and all customers are evacuated from the Front Lobby.
- If time permits in the case of a fire/flood or after the fact:
 - Obtain tarps from the warehouse to cover ballots if needed.
 - Relocate voted ballots to a safe location or cover with tarp
 - Cover ballots with tarp if time allows for fire and water damage.
 - Cover PC's and heavy machinery if needed (envelope opener, printers, etc.)
- To ensure that an election can be conducted due to evacuation or destruction to the building, a list of the vendors to contact will be kept by the Vote by Mail Manager outside of the office to duplicate or reorder any needed election supplies.

Vendor information- Contact names, telephone numbers and addresses for:

Burks Printing- VBM envelopes	(916) 344-0652
Runbeck Election Services- Ballots and Mailing Services	(602) 230-0510
Merrill Printers- Voter Information Guides	(714) 690-2294

APPENDIX K - SECURITY PLAN

VOTING SYSTEMS AND TECHNOLOGY

In the event of an emergency the following procedures are to be followed:

The Manager of Voting Systems and Technology will ensure the following:

All voting systems and technology staff have been accounted for

A pre-designated staff member will be responsible to secure the Iron Mountain container with a numbered seal. The sealed Iron Mountain container shall be removed from the server room with the current election data and immediately be taken to the group evacuation area. The election material will be stored and updated through the election process. The Iron Mountain box will contain the following as described in our current policy and procedure manual:

- A USB external hard drive with data and applications loaded as listed below:
 - Voting System Application
 - Current Election Data (Voting System Database)
 - PDF of election ballots
 - Voter Information Guide Application
 - Voter Information Guide
 - PDF of Voter Information Guide
- One Zip Disk containing the election definition to load on a 650 central scanner.
- Ten (10) blank PCMCIA cards
- One (1) Omni Drive to burn the PCMCIA cards
- Three (3) blank zip drives for the 650 central scanners
- One (1) external zip drive to upload the zip disk
- Two (2) lap tops loaded with the voting system application.
- Upon reentry into the VRE facility all VST staff will meet in the VST cubical area for a final group inspection of the c-cure system, server room and the ballot tabulation room.
- Two designated staff members will assist VRE department staff with any potential computer related issues.

2. In the event of power loss, the following procedures are to be followed:

The Manager of Voting Systems and Technology will ensure the following:

- All voting systems and technology staff have been accounted for
- A designated staff member has been assigned to the ballot tabulation room in non election mode, when an election is in process, two people will be assigned to this room
- A designated staff member has been assigned to check on the server room
- A designated staff member has been assigned to check on the c-cure system
- All designated staff members are to advise the Manager of VST, of their status upon first inspection and every fifteen minutes there after by using the Nextel radios.
- Upon restoration of power, each designated staff member will ensure their respective areas of responsibility are functioning properly.
- After each staff member has conducted a final inspection of their respective area, they will report their findings to the Manager of VST.

APPENDIX K - SECURITY PLAN

- If the building was evacuated – Refer to Item #1
- Two designated staff members will assist VRE department staff with any potential computer related issues.

3. **In the event of power loss and the VST area has generator power, the following procedures are to be followed:**

The Manager of Voting Systems and Technology will ensure the following:

- All voting systems and technology staff have been accounted for
- A designated staff member has been assigned to the ballot tabulation room in non-election mode; when an election is in process, two people will be assigned to this room
- A designated staff member has been assigned to check on the c-cure system
- All designated staff members are to communicate and confirm they have power in their respective areas and the functions of each area are working properly.
- All designated staff members are to advise the Manager of VST, their status upon first inspection and every fifteen minutes there after by using the Nextel radios.
- Upon restoration of power, each designated staff member will ensure their respective areas of responsibility are functioning properly.
- Two designated staff members will assist VRE department staff with any potential computer related issues.

APPENDIX K - SECURITY PLAN

CAMPAIGN SERVICES

Due to an unforeseen emergency or disaster, it may be necessary to evacuate our office for a period of time, and unable to return. We must be prepared to carry on our normal functions in another location. To ensure that the "Election Must Go On" we will outline what items we need to function outside our office, and complete the nomination process.

Upon the notification that the building must be evacuated, the following items must be taken when evacuating, if time and personal safety allows:

- Money Tray and Receipts
- A copy of the CFMR001 (Candidate Proof List) (located in red binder on front counter)
- The Candidate files/folders (located in file carts which are located next to supervisor's cubicle during filing)
- The CD File located in the Emergency Binder, which contains Candidate Guide, Nomination Forms, Index of Elected Officials, and Election/E-date Calendars. (located in the cities' file cart)
- Measure Folders (located Manager's office)
- Election Folder (located in cities' file cart next to supervisor's cubicle)
- The Proof Book, which contains the items received by VST (located on 3 tier file cabinet behind supervisor's cubicle)
- Petition in Lieu Log Book (located on counter attached to cubicle 129E)
- Petition in Lieu/Nomination Signatures clip board, 2 wire baskets signatures to be verified/completed (located VBM /Campaign Services counter)
- File Stamp and time clock (located at the front counter)
- County seal stamp and Jill LaVine stamp (located in top right hand drawer at counter)

The above documents and files will ensure that staff could process candidates at another location, on the assumption that we had DFM available through a PC. We would file candidates conditionally, at that time advising them that we will be calling them if they were not qualified to run (Live out of the area, etc.). Once back on line with (DFM), can print documents and enter candidates into system, we would be able to resume normally in just a few days.

Starting at E-83 staff will create an emergency binder with the above items. This binder will be located in cities' file cart.

Other items will be also gathered at the time of incident if personal safety permits.

APPENDIX K - SECURITY PLAN

REGISTRATION & OUTREACH SERVICES

In the event of an emergency requiring building evacuation, these procedures are to be followed:

The Registration and Outreach Manager will ensure that all Registration and Outreach staff is accounted for and evacuated from the building.

If time permits in the case of a fire/flood or after the fact:

- Cover the computers with a tarp or heavy plastic
- Cover the most current affidavits of registration that have not been scanned and entered into the Election Management Database
- Cover any petition that is in house for certification
- Gather all video equipment, iPads, and a red supply bag for Outreach
- Other items will also be gathered and covered or taken at the time of the incident if personal safety permits

APPENDIX K - SECURITY PLAN

PRECINCT OPERATIONS

In the event of an emergency requiring building evacuation on or before the voting period, due to fire, bomb, flood, etc., these procedures are to be followed:

1. All employees (permanent and temporary) are to immediately leave the building and report to the designated meeting site (**Burlington Building – North Sidewalk**).
2. The following items are to be procured prior to departing the building, in order of importance, if time and personal safety allows:
 - **Thumb drive on a lanyard**, located in the cabinet nearest the fire extinguisher/fax machine, with the following information saved:
 - Equipment Delivery & Drop Box /Pick-up vendor contact information
 - Inventory List (From Warehouse, most recent version)
 - Records Storage List (From Warehouse, most recent version)
 - Complete list of Vote Centers & Ballot Drop Box locations, with contact information
 - Complete list of Election Officers *Update to thumb drive at E-15 and again at E-5*
 - **Tablet (or Laptop) from storage area**
 - **Verizon “Hot Spot” air card from tablet storage area, for internet/EIMS access**

It is the responsibility of the Election Supervisor to ensure all of the reports/information on the thumb drive is current and relevant for the upcoming election.

3. Once safely at assembly area, the Precinct Operations Manager or Supervisor will load the thumb drive on to the tablet or laptop.
4. The Precinct Operations Manager will then divide the list of Vote Center Inspectors for staff to call, in conjunction with VST and their technical support teams. Ensure the Inspectors are given the following information:
 - Precinct Operations Manager’s cell phone number.
 - Current Manager, Courtney Bailey: **(916) 704-8389**
 - Alternate drop box site location(s) for ballot and/or equipment returns
 - Alternate phone number(s) to call for assistance at the Vote Centers

Election Officers will follow the instructions in the Election Officer Manual unless otherwise instructed by technical support teams or office personnel.

Non-election specific evacuations will require the procurement of the tablet and Verizon air card for internet and EIMS access. Precinct Operations Manager has VPN remote access.

APPENDIX K - SECURITY PLAN

WAREHOUSE SECTION

Florin Station Evacuation: In the event of an emergency requiring building evacuation, the following procedures shall be followed:

1. Make designated assembly area known to all personnel (**Burlington Building – North Sidewalk**)
2. Warehouse Supervisor to procure the sign-in sheet used for temporary staff and assist the Precinct Operations Manager in accounting for all personnel in the building that day.
3. If time and safety permits, the Warehouse Supervisor will oversee the following:
 - Remove Forklifts and Pallet Jacks from building to a safe location
 - List of election material and documents to be removed, in order of importance:
 - Official Ballots
 - Voted Ballots
 - Roster Books
 - Blue Files
 - Historical Records
 - Personnel Records
 - Fiscal Records
 - Watermarked Paper (from SOS, for Mello Roos)

Loss of Florin Station facility: In the event of an emergency where the Florin Station facility is unusable, the following are possible facilities to accommodate election processing and returns:

- Sears Parking Lot at Florin Road and 65th Street
- DHHS Parking Lot at 7001 East Parkway
- North Corporation Yard at 5026 Don Julio Blvd

Wherever an alternate location is established, that site shall accept and secure the following election materials:

- Official Ballots
 - Voted Ballots will be delivered from Transport vans, including Vote by Mail and Provisional ballots
 - Blank ballot stock
- Additional election supplies and equipment

While safely at alternate location:

- Coordinate with Sheriff's Department for Security
- Coordinate with equipment delivery vendor for transportation, including the need for 2 extra trailers to handle Florin Station equipment returns.
- Coordinate with Delivery vendor for possible rescheduling of pick-up of election equipment

In the absence of storage equipment (Pallets, Hampers, Carts, Pallet Jacks, Forklifts, Big Boys, Shopping carts, Postal Cages) all election supplies and equipment will be transferred by hand.

SACRAMENTO COUNTY ELECTION ADMINISTRATION PLAN 2018

APPENDIX K - SECURITY PLAN

Off Site Equipment Storage: After Logic and Accuracy testing has been completed, Warehouse staff will coordinate with VST to deliver ballot tabulators to be securely stored at Sacramento County Office of Emergency Services. Stored equipment will be picked up after the canvass period is complete.

